

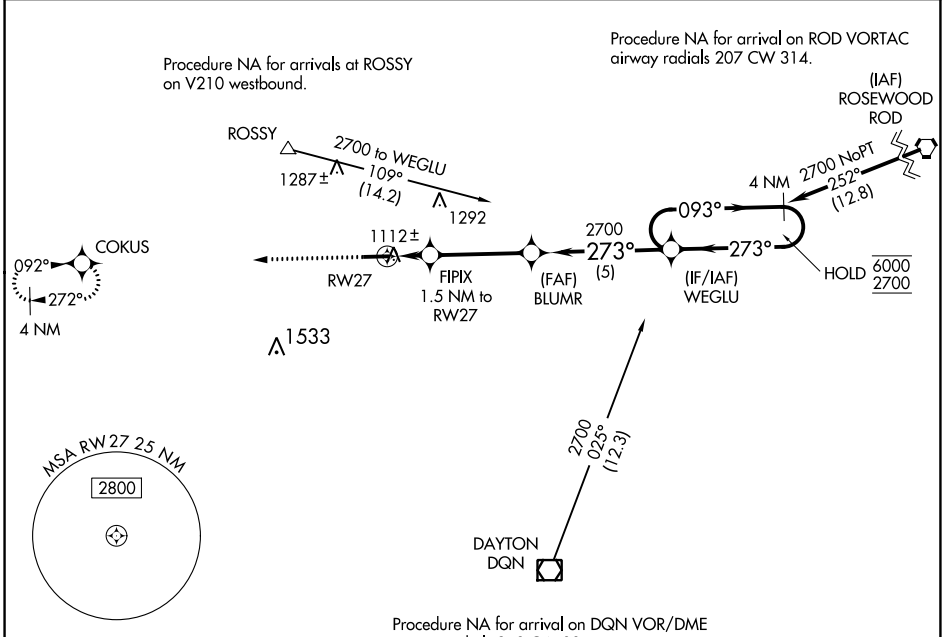
WAAS CH 86243 W27A	APP CRS 273°	Rwy Idg TDZE Apt Elev	4802 1007 1007
--	------------------------	-----------------------------	---

RNAV (GPS) RWY 27

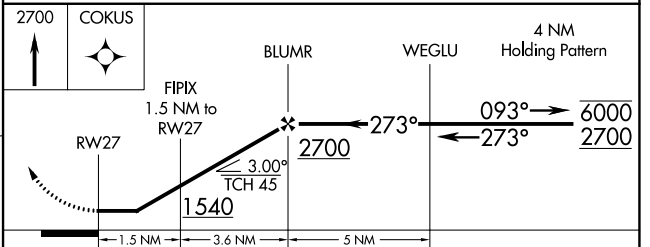
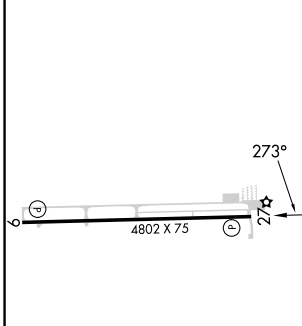
DARKE COUNTY (VES)

RNP APCH. ▼ Rwy 27 helicopter visibility reduction below 1 SM NA. Straight-in Rwy 27 NA at night, Circling Rwy 27 NA at night.	MISSED APPROACH: Climb to 2700 direct COKUS and hold.
--	---

AWOS-3T 125.9	COLUMBUS APP CON 134.45 352.05	UNICOM 122.8 (CTAF)
-------------------------	--	-------------------------------



ELEV 1007	TDZE 1007
-----------	-----------



CATEGORY	A	B	C	D
LP MDA		1380-1 373 (400-1)		NA
LNAV MDA		1380-1 373 (400-1)		NA
CIRCLING	1440-1 433 (500-1)	1480-1 473 (500-1)	1660-1¾ 653 (700-1¾)	NA

EC-2, 28 NOV 2024 to 26 DEC 2024

EC-2, 28 NOV 2024 to 26 DEC 2024