

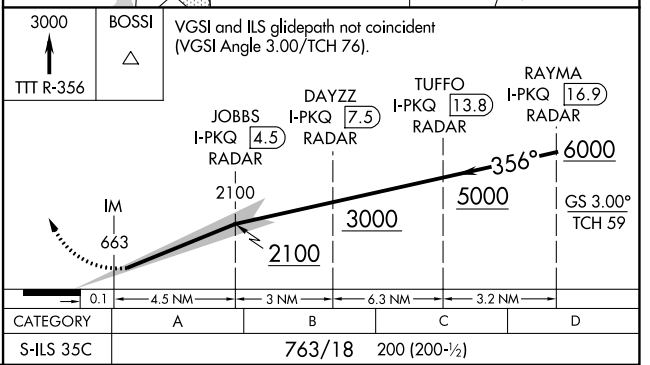
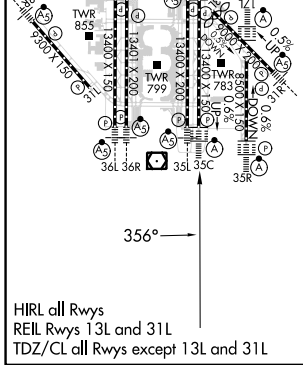
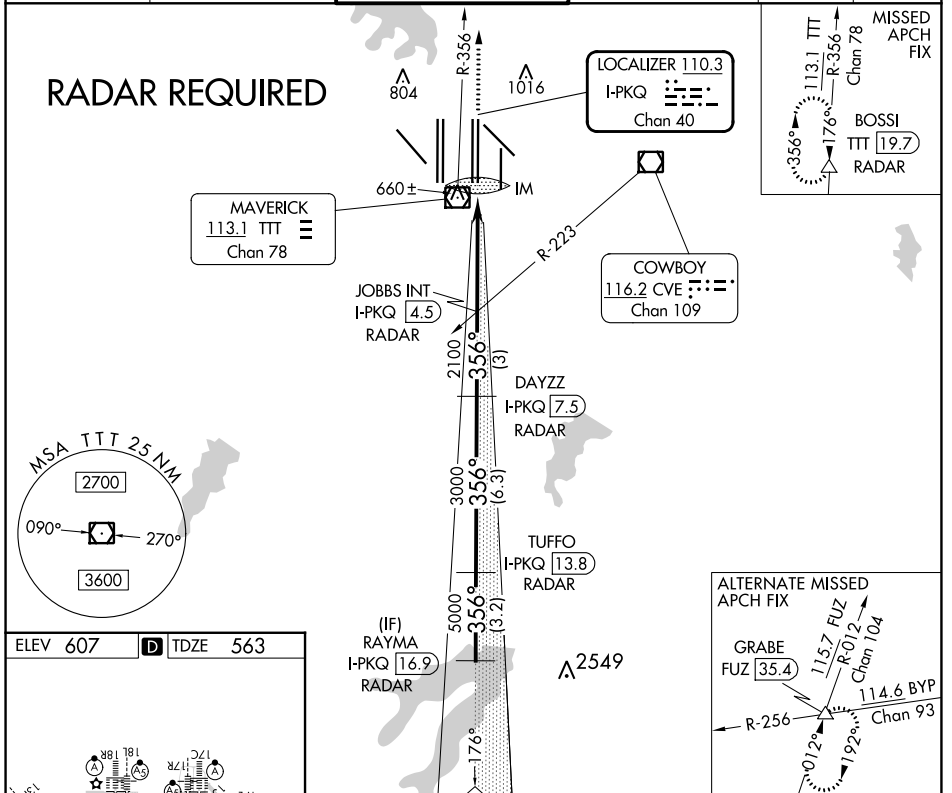
LOC/DME I-PKQ <b>110.3</b> Chan 40	APP CRS <b>356°</b>	Rwy Idg TDZE Apt Elev	<b>13400</b> <b>563</b> <b>607</b>
--	------------------------	-----------------------------	--

# CONVERGING ILS RWY 35C

DALLAS-FORT WORTH INTL (DFW)

DME or RADAR required. Simultaneous approach authorized with Converging ILS Rwy 31R.		ALSF-2 	MISSED APPROACH: Climb to 3000 on TTT VOR/DME R-356 to BOSSI/TTT 19.7 DME/RADAR and hold.
---	--	------------	---

D-ATIS ARR <b>123.775</b> DEP <b>135.925</b>	LONE STAR APP CON <b>127.075</b>	DFW TOWER <b>126.55 127.5</b> EAST <b>124.15 134.9</b> WEST	GND CON <b>121.65 121.8</b> EAST <b>121.85</b> WEST	CLNC DEL <b>128.25</b>	CPDLC
--	-------------------------------------	---	---	---------------------------	-------



SC-2, 28 NOV 2024 to 26 DEC 2024

SC-2, 28 NOV 2024 to 26 DEC 2024