

LOC/DME I-LWN <b>109.5</b> Chan <b>32</b>	APP CRS <b>135°</b>	Rwy Idg TDZE Apt Elev	<b>9300</b> <b>591</b> <b>607</b>
-------------------------------------------------	------------------------	-----------------------------	-----------------------------------------

# ILS RWY 13R (SA CAT I & II)

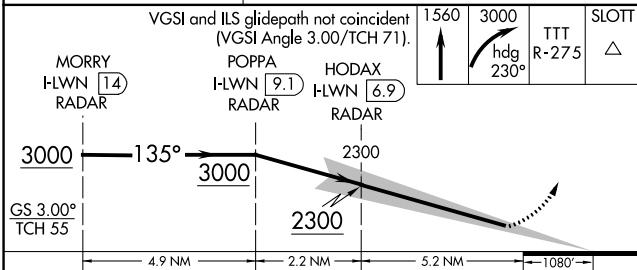
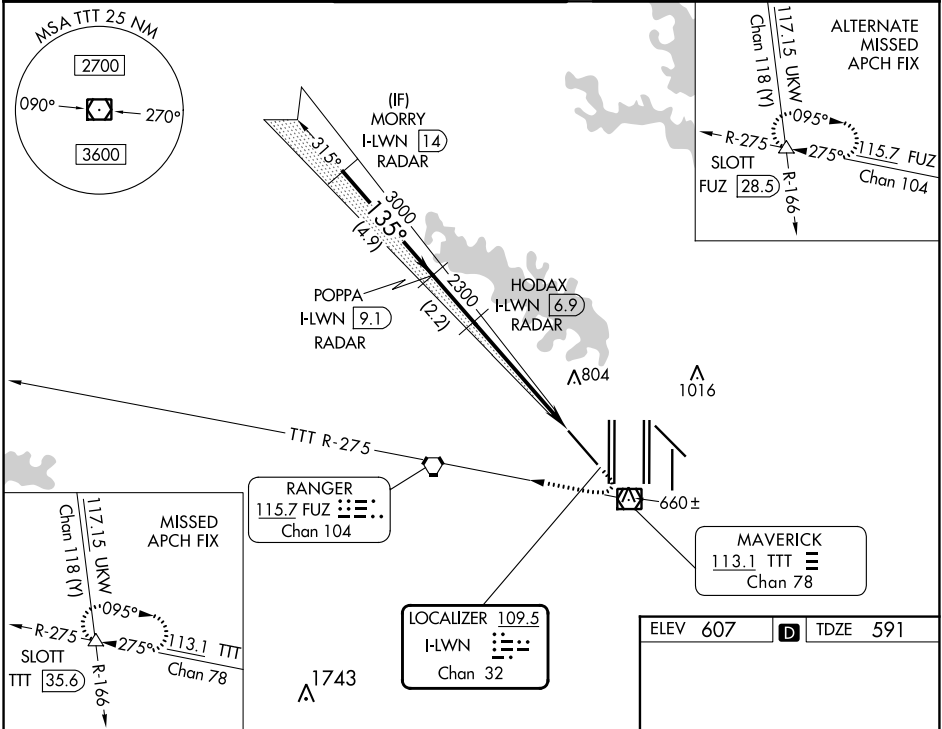
## DALLAS-FORT WORTH INTL (DFW)

**RADAR required for procedure entry.**

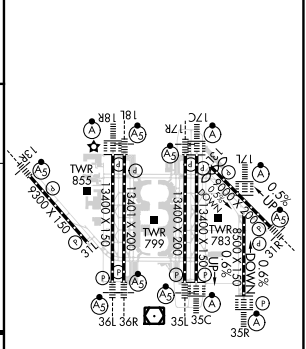
SA Cat I: Requires specific OPSPEC, MSPEC, or LOA approval and use of HUD to DH. SA Cat II: Reduced lighting: Requires specific OPSPEC, MSPEC, or LOA approval and use of autoland or HUD to touchdown.

MALS R MISSED APPROACH: Climb to 1560 then climbing right turn to 3000 on heading 230° and TTT VOR/DME R-275 to SLOTT INTT/TTT 35.6 DME and hold.

D-ATIS ARR <b>123.775</b> DEP <b>135.925</b>	LONE STAR APP CON <b>133.15 118.1</b>	DFW TOWER <b>126.55 127.5 EAST</b> <b>124.15 134.9 WEST</b>	GND CON <b>121.65 121.8 EAST</b> <b>121.85 WEST</b>	CLNC DEL <b>128.25</b>	CPDLC
----------------------------------------------------	------------------------------------------	-------------------------------------------------------------------	-----------------------------------------------------------	---------------------------	-------



ELEV 607	D	TDZE 591
----------	---	----------



CATEGORY	A	B	C	D
S-ILS 13R	SA CAT I	RA 149/14	150 DA 741	
S-ILS 13R	SA CAT II	RA 99/12	100 DA 691	

**SA CATEGORY I & II ILS SPECIAL AIRCREW & AIRCRAFT CERTIFICATION REQUIRED**

HIRL all Rwy's  
REIL Rwy's 13L and 31L  
TDZ/CL all Rwy's except 13L, and 31L

SC-2, 28 NOV 2024 to 26 DEC 2024

SC-2, 28 NOV 2024 to 26 DEC 2024