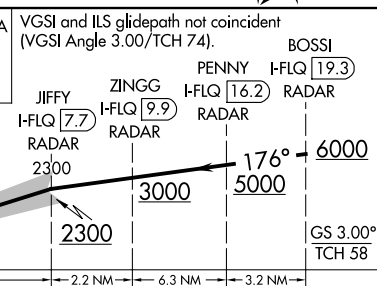
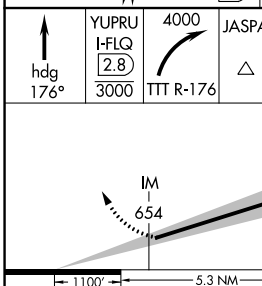
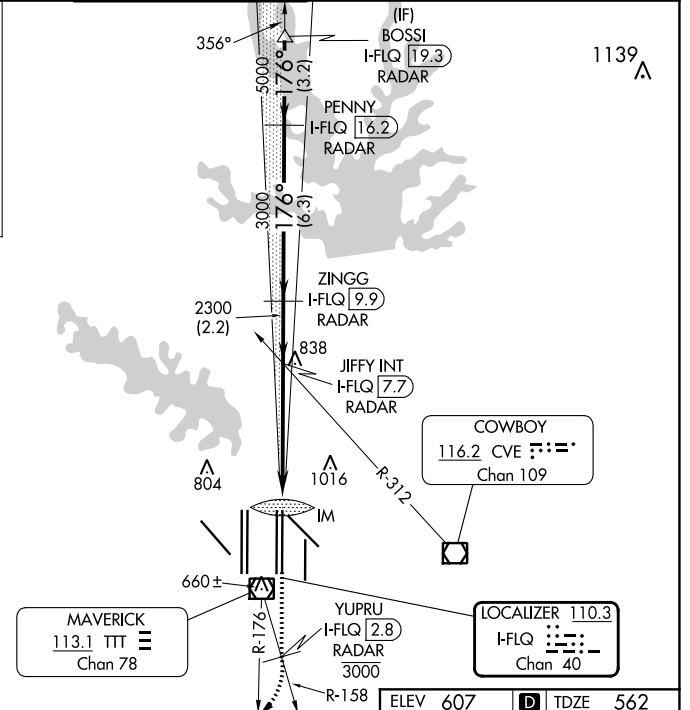
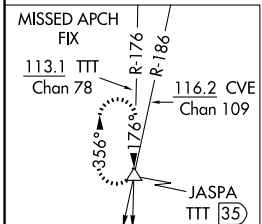
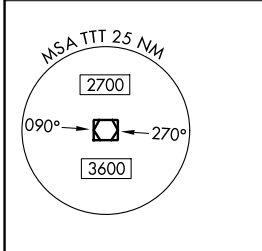
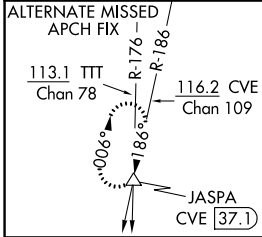


LOC/DME I-FLQ <b>110.3</b> Chan <b>40</b>	APP CRS <b>176°</b>	Rwy ldg TDZE Apt Elev	<b>13400</b> <b>562</b> <b>607</b>
---	------------------------	-----------------------------	--

# ILS RWY 17C (CAT II & III)

DALLAS-FORT WORTH INTL (DFW)

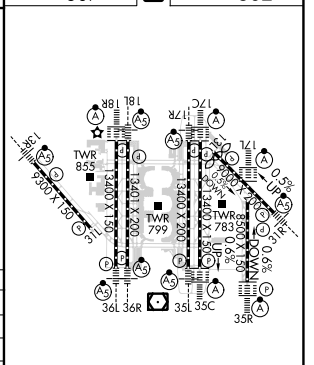
DME and RADAR required.		ALSF-2	MISSED APPROACH: Climb on heading 176° to cross YUPRU/2.8 DME/RADAR at or below 3000, then climbing right turn to 4000 on TTT VOR/DME R-176 to JASPA/TTT 35 DME and hold.			
Simultaneous approach authorized with Rwy 17L, 18L/R.		(A)				
D-ATIS ARR <b>123.775</b> DEP <b>135.925</b>	LONE STAR APP CON <b>127.075</b>	DFW TOWER <b>126.55 127.5</b> EAST <b>124.15 134.9</b> WEST		GND CON <b>121.65 121.8</b> EAST <b>121.85</b> WEST	CLNC DEL <b>128.25</b>	CPDLC



ELEV 607	TDZE 562
----------	----------

CATEGORY	A	B	C	D
S-ILS 17C	CAT II RA 102/12 100 DA 662			
S-ILS 17C	CAT III RVR 06			

**CATEGORY II & III ILS - SPECIAL AIRCREW & AIRCRAFT CERTIFICATION REQUIRED**



HIRL all Rwws  
REIL Rwws 13L and 31L  
TDZ/CL all Rwws except 13L and 31L

SC-2, 28 NOV 2024 to 26 DEC 2024

SC-2, 28 NOV 2024 to 26 DEC 2024