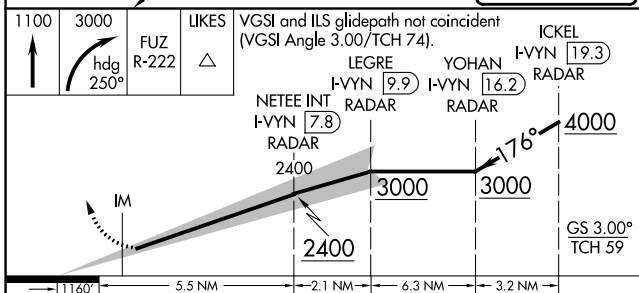
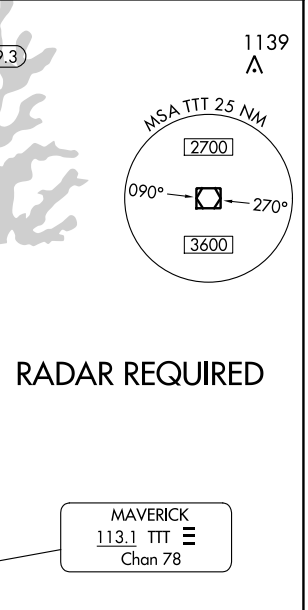
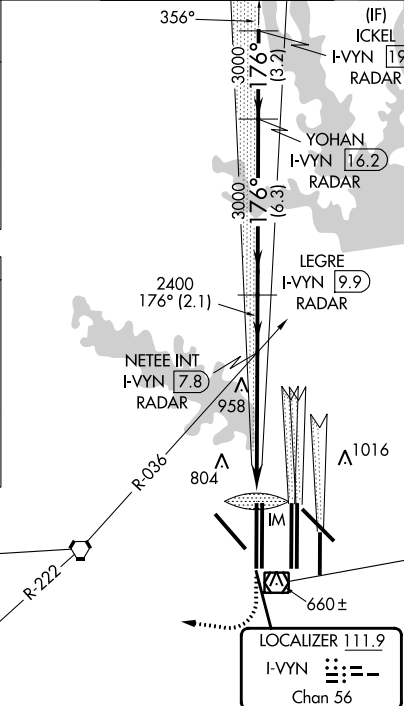
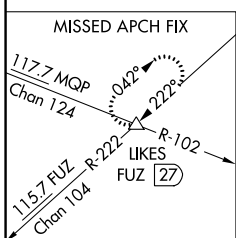
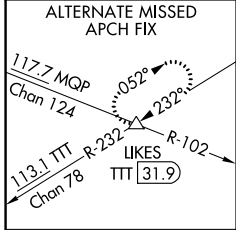


LOC/DME I-VYIN 111.9 Chan 56	APP CRS 176°	Rwy Idg TDZE Apt Elev 13400 607 607
--	------------------------	---

ILS RWY 18R (SA CAT I)

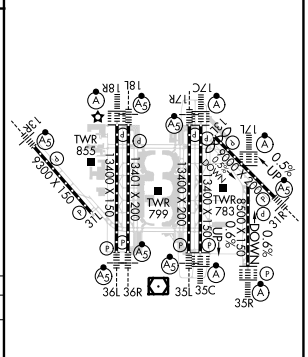
DALLAS-FORT WORTH INTL (DFW)

▽ DME or RADAR required. Simultaneous approach authorized with Rwy 17 L/C/R. Requires specific OPSPEC, MSPEC, or LOA approval and use of HUD to DH. ▲	Rwy 18R ALS-F2 A	MISSED APPROACH: Climb to 1100 then climbing right turn to 3000 on heading 250° and FUZ VORTAC R-222 to LIKES INT/FUZ VORTAC 27 DME and hold.	
		D-ATIS ARR 123.775 DEP 135.925	LONE STAR APP CON 118.425
		CLNC DEL 128.25	CPDLC



1100	3000	LIKES	VGSI and ILS glidepath not coincident (VGSI Angle 3.00/TCH 74).	ICKEL I-VYIN 19.3
↑	hdg 250°	FUZ R-222	LEGRE I-VYIN 9.9	YOHAN I-VYIN 16.2
			NETEE INT I-VYIN 7.8	
			IM	
			2400	3000
			5.5 NM	2.1 NM
			6.3 NM	3.2 NM
CATEGORY	A	B	C	D
S-ILS 18R	RA 158/14		150 DA 757	

ELEV 607	D	TDZE 607
----------	----------	----------



SA CATEGORY I ILS - SPECIAL AIRCREW & AIRCRAFT CERTIFICATION REQUIRED

HIREL all Rwys
REIL Rwys 13L and 31L
TDZ/CL all Rwys except 13L and 31L

SC-2, 28 NOV 2024 to 26 DEC 2024

SC-2, 28 NOV 2024 to 26 DEC 2024