

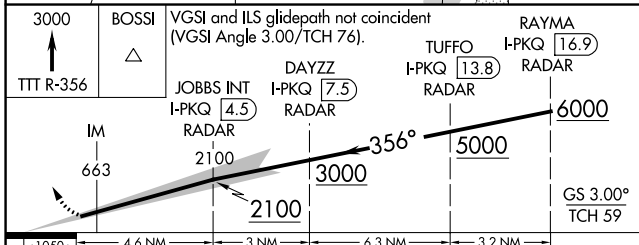
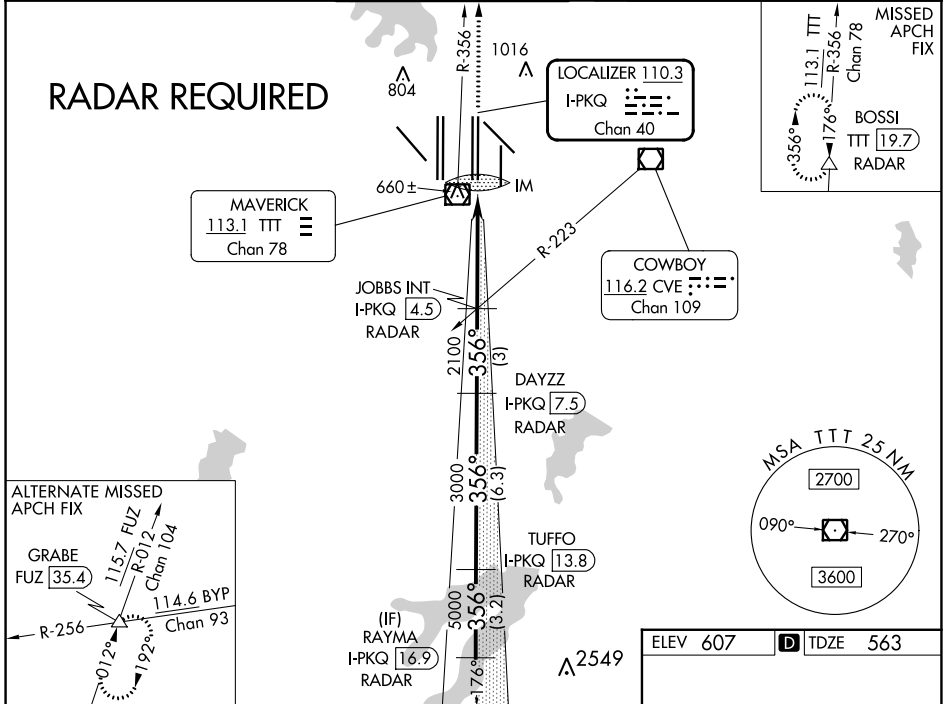
LOC/DME I-PKQ 110.3 Chan 40	APP CRS 356°	Rwy Idg TDZE Apt Elev	13400 563 607
--	------------------------	-----------------------------	--

ILS RWY 35C (CAT II & III)

DALLAS-FORT WORTH INTL (DFW)

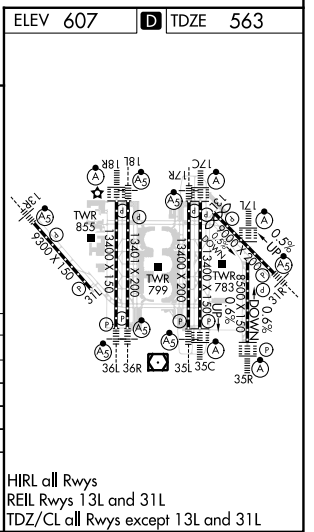
DME or RADAR required. Simultaneous approach authorized with Rwy 35R, Rwy 36L/R.		ALSF-2 	MISSED APPROACH: Climb to 3000 on TTT VOR/DME R-356 to BOSSI/TTT 19.7 DME/RADAR and hold.
---	--	------------	---

D-ATIS ARR 123.775 DEP 135.925	LONE STAR APP CON 127.075	DFW TOWER 126.55 127.5 EAST 124.15 134.9 WEST	GND CON 121.65 121.8 EAST 121.85 WEST	CLNC DEL 128.25	CPDLC
--	-------------------------------------	---	---	---------------------------	-------



CATEGORY	A	B	C	D
S-ILS 35C	CAT II RA 100/12 100 DA 663			
S-ILS 35C	CAT IIIa RVR 07			
S-ILS 35C	CAT IIIb RVR 06			
S-ILS 35C	CAT IIIc NA			

CATEGORY II & III ILS - SPECIAL AIRCREW & AIRCRAFT CERTIFICATION REQUIRED



SC-2, 28 NOV 2024 to 26 DEC 2024

SC-2, 28 NOV 2024 to 26 DEC 2024