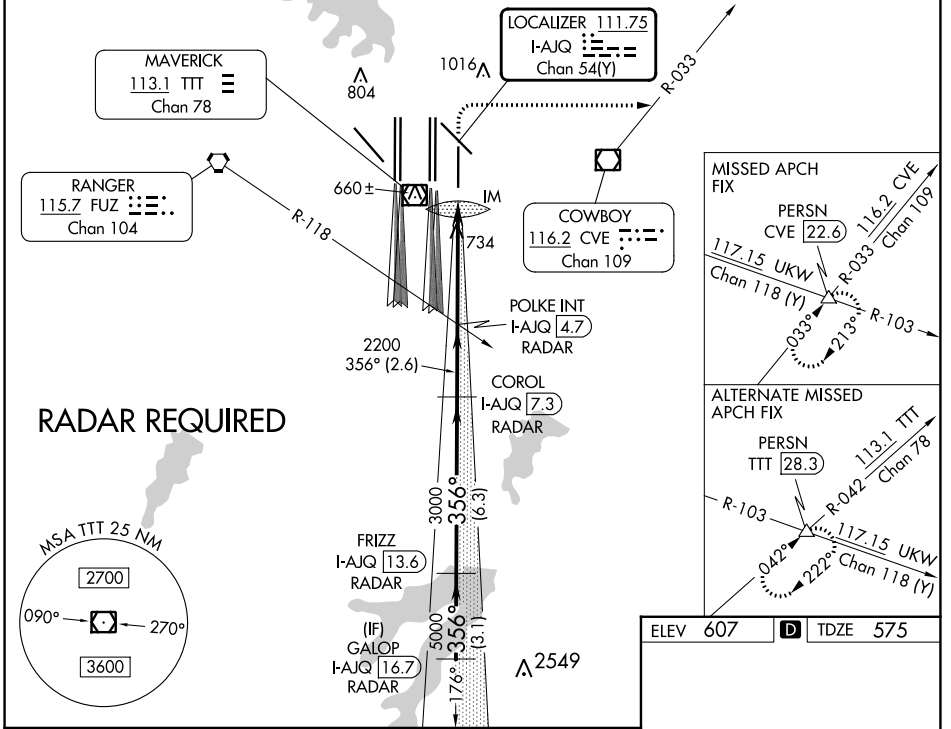


LOC/DME I-AJQ <b>111.75</b> Chan 54(Y)	APP CRS <b>356°</b>	Rwy Idg TDZE Apt Elev <b>8500</b> <b>575</b> <b>607</b>
--	------------------------	--

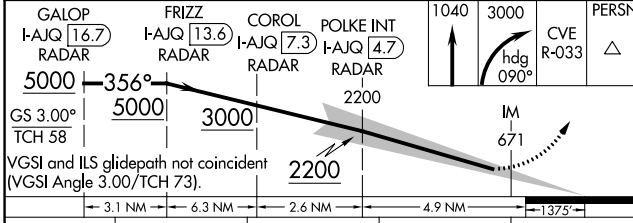
# ILS RWY 35R (CAT II & III)

DALLAS-FORT WORTH INTL (DFW)

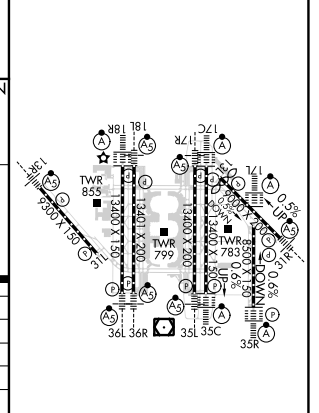
Simultaneous approach authorized with Rwy 36L/R and Rwy 35L/C. DME required.		ALSF-2 	MISSED APPROACH: Climb to 1040 then climbing right turn to 3000 on heading 090° and CVE VOR/DME R-033 to PERSN/CVE 22.6 DME and hold.		
D-ATIS ARR <b>123.775</b> DEP <b>135.925</b>	LONE STAR APP CON <b>119.4</b>	DFW TOWER <b>126.55 127.5</b> EAST <b>124.15 134.9</b> WEST	GND CON <b>121.65 121.8</b> EAST <b>121.85</b> WEST	CLNC DEL <b>128.25</b>	CPDLC



ELEV 607	TDZE 575
----------	----------



GS 3.00° TCH 58	5000	3000	2200	1040	3000	PERSN
3.1 NM		6.3 NM		2.6 NM		4.9 NM
A		B		C		D
S-ILS 35R	CAT II RA 94/12		100 DA 675			
S-ILS 35R	CAT IIIa		RVR 07			
S-ILS 35R	CAT IIIb		RVR 06			
S-ILS 35R	CAT IIIc		NA			



## CATEGORY II & III ILS - SPECIAL AIRCREW & AIRCRAFT CERTIFICATION REQUIRED

HIRL all Rwys  
REL Rwys 13L and 31L  
TDZ/CL all Rwys except 13L, and 31L

SC-2, 28 NOV 2024 to 26 DEC 2024

SC-2, 28 NOV 2024 to 26 DEC 2024