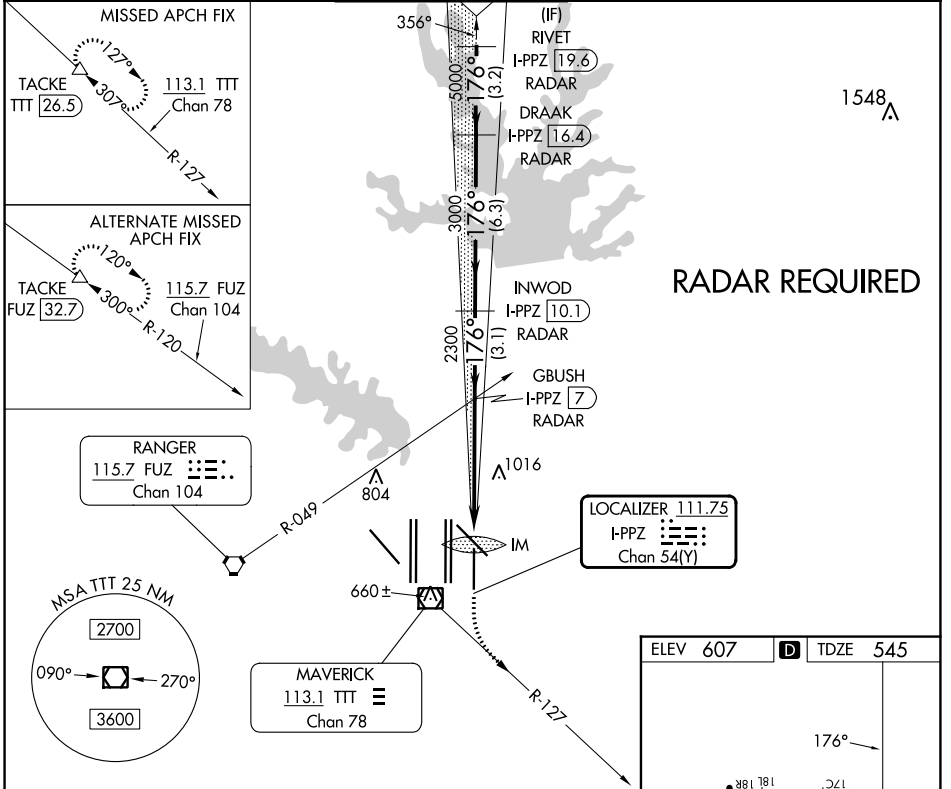


LOC/DME I-PPZ 111.75 Chan 54 (Y)	APP CRS 176°	Rwy Idg TDZE Apt Elev	8500 545 607
--	------------------------	-----------------------------	---

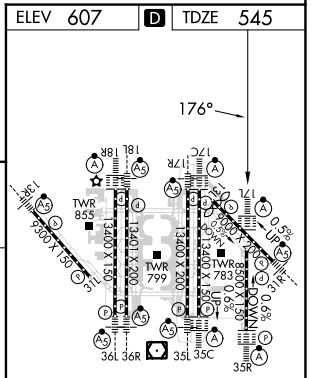
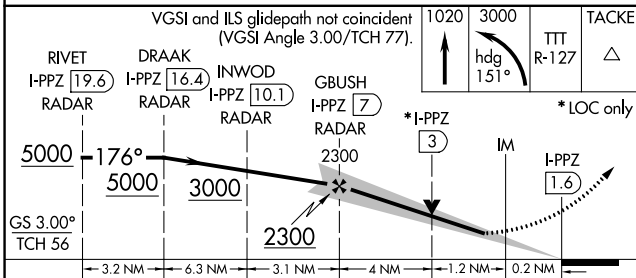
ILS or LOC RWY 17L

DALLAS-FORT WORTH INTL (DFW)

▽ Simultaneous approach authorized with Rwy 17C/R and Rwy 18L/R. DME required. ALSIF-2 	MISSED APPROACH: Climb to 1020 then climbing left turn to 3000 on heading 151° and TTT VOR/DME R-127 to TACKE/TTT 26.5 DME and hold.				
D-ATIS ARR 123.775 DEP 135.925	LONE STAR APP CON 119.4	DFW TOWER 126.55 127.5 EAST 124.15 134.9 WEST	GND CON 121.65 121.8 EAST 121.85 WEST	CLNC DEL 128.25	CPDLC



RADAR REQUIRED



CATEGORY	A	B	C	D
S-ILS 17L	745/18 200 (200-½)			
S-LOC 17L	1040/24	495 (500-½)	1040/50	495 (500-1)
HIRL all Rwy's REIL Rwy's 13L and 31L TDZ/CL all Rwy's except 13L and 31L FAF to MAP 5.4 NM Knots: 60 90 120 150 180 Min:Sec: 5:24 3:36 2:42 2:10 1:48				

SC-2, 28 NOV 2024 to 26 DEC 2024

SC-2, 28 NOV 2024 to 26 DEC 2024