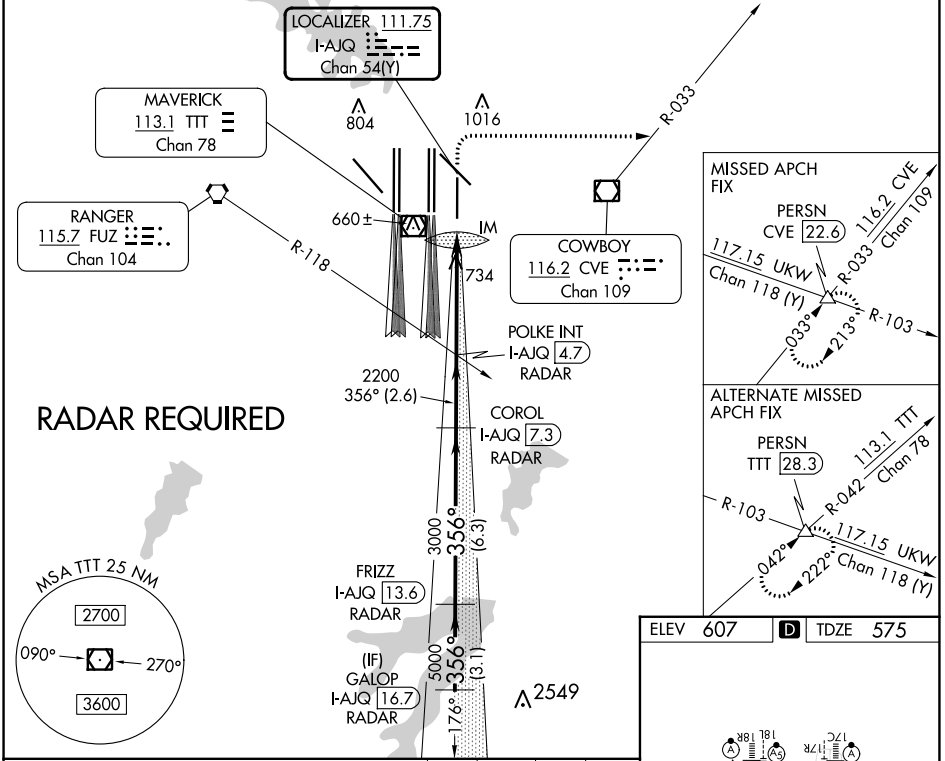


LOC/DME I-AJQ 111.75 Chan 54(Y)	APP CRS 356°	Rwy Idg TDZE Apt Elev 8500 575 607
--	------------------------	--

ILS or LOC RWY 35R

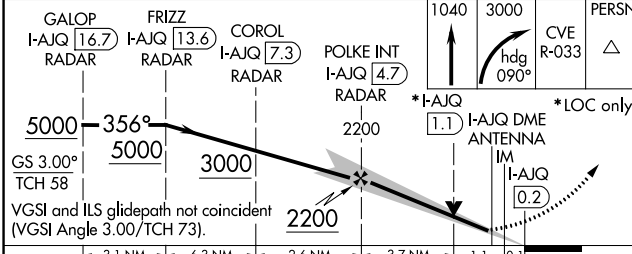
DALLAS-FORT WORTH INTL (DFW)

ALSF-2 Simultaneous approach authorized with Rwy 36L/R and Rwy 35L/C. DME required.		MISSED APPROACH: Climb to 1040 then climbing right turn to 3000 on heading 090° and CVE VOR/DME R-033 to PERSN/CVE 22.6 DME and hold.			
D-ATIS ARR 123.775 DEP 135.925	LONE STAR APP CON 119.4	DFW TOWER 126.55 127.5 EAST 124.15 134.9 WEST	GND CON 121.65 121.8 EAST 121.85 WEST	CLNC DEL 128.25	CPDLC

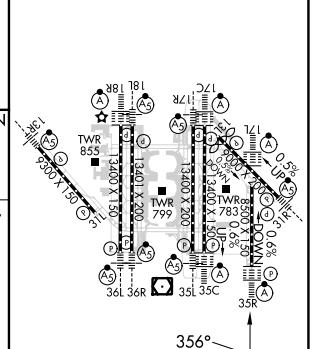


SC-2, 28 NOV 2024 to 26 DEC 2024

SC-2, 28 NOV 2024 to 26 DEC 2024



ELEV 607	D TDZE 575
----------	-------------------



CATEGORY	A	B	C	D
S-ILS 35R	775/18 200 (200-1/2)			
S-LOC 35R	1040/24	465 (500-1/2)	1040/50	465 (500-1)

HIRL all Rwys					
REIL Rws 13L and 31L					
TDZ/CL all Rws except 13L, and 31L					
FAF to MAP 4.9 NM					
Knots	60	90	120	150	180
Min:Sec	4:54	3:16	2:27	1:58	1:38