

LOC/DME I-FJN 110.55 Chan 42 (Y)	APP CRS 356°	Rwy Idg 36R 36L TDZE 581 588 Apt Elev 607 607
-----------------------------------------------	------------------------	----------------------------------------------------------------------------

ILS or LOC RWY 36R

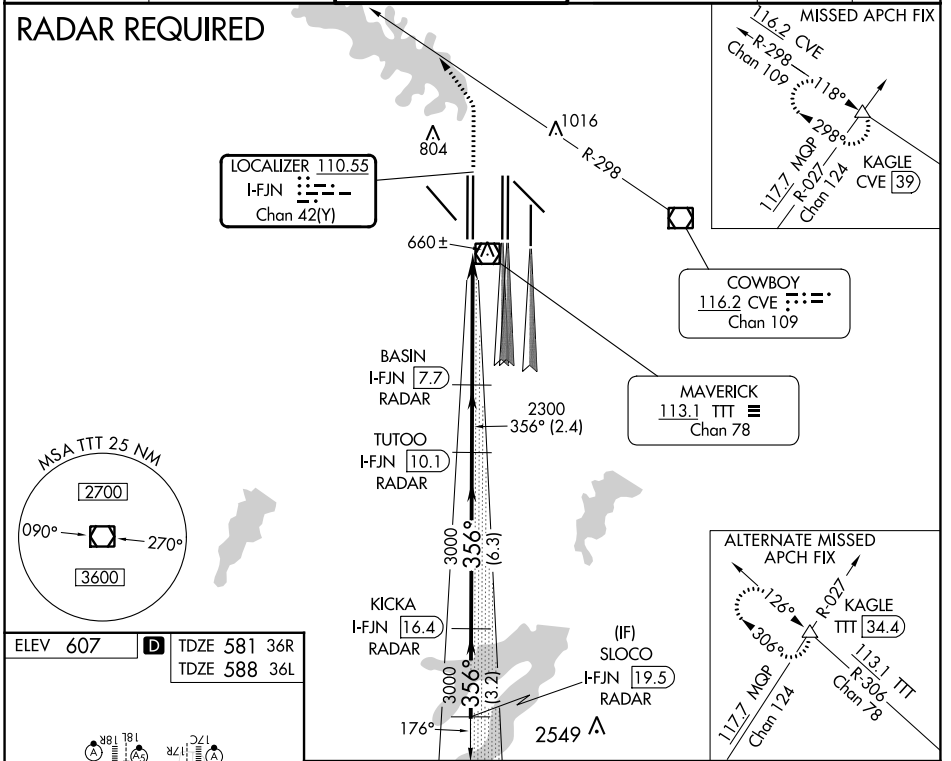
DALLAS-FORT WORTH INTL (DFW)

Simultaneous approach authorized with Rwy 35L/C/R. Inop table does not apply to Sidestep 36L Cats A and B. DME or RADAR required.

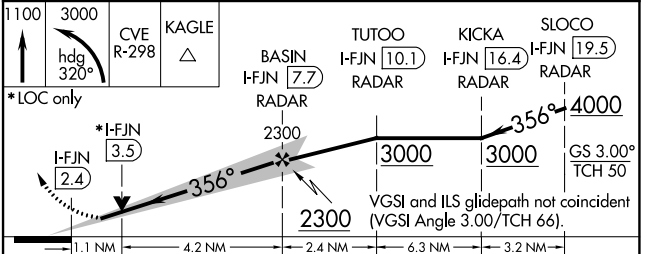
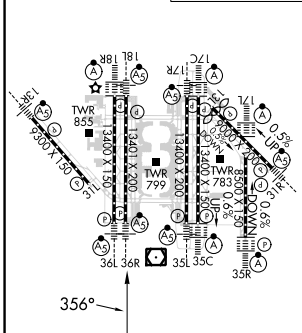
Rwys 36R/L
MALSR
AS

MISSED APPROACH: Climb to 1100, then climbing left turn to 3000 on heading 320° and CVE VOR/DME R-298 to KAGLE INT/CVE 39 DME and hold.

D-ATIS ARR 123.775 DEP 135.925	LONE STAR APP CON 118.425	DFW TOWER 126.55 127.5 EAST 124.15 134.9 WEST	GND CON 121.65 121.8 EAST 121.85 WEST	CLNC DEL 128.25	CPDLC
----------------------------------------------------	-------------------------------------	-------------------------------------------------------------------	-----------------------------------------------------------	---------------------------	-------



ELEV 607	D	TDZE 581 36R TDZE 588 36L
----------	----------	------------------------------



CATEGORY	A	B	C	D
S-ILS 36R	781/18 200 (200-½)			
S-LOC 36R	1000/24	419 (400-½)	1000/40	419 (400-¾)
SIDESTEP 36L	1080/50 492 (500-1)			1080-1½ 492 (500-1½)

SC-2, 28 NOV 2024 to 26 DEC 2024

SC-2, 28 NOV 2024 to 26 DEC 2024