

# KINGDOM FOUR DEPARTURE

SC-2, 28 NOV 2024 to 26 DEC 2024

**TOP ALTITUDE:**  
**JETS: 10000**  
**PROPS: 2000**

RADAR and DME required.

WICHITA FALLS  
112.7 SFS  
Chan 74

LUBBOCK  
109.2 LBB  
Chan 29

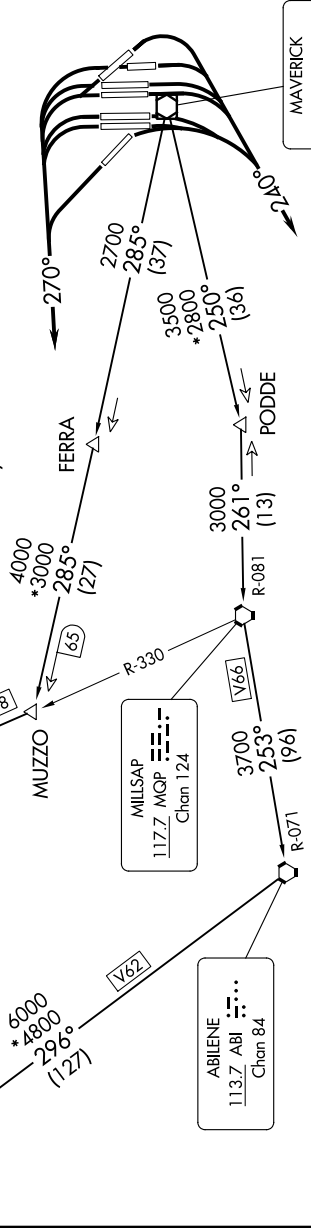
ABILENE  
113.7 ABL  
Chan 84

MILLSAP  
117.7 MQP  
Chan 124

MAVERICK  
113.1 TTT  
Chan 78

LONE STAR DEP CON  
126.475 363.15 (JETS ONLY)  
135.975 379.9 (Rwys 13L/R, 17L/C/R, 18L/R)  
118.1 306.95 (Rwys 35L/C/R, 36L/R)  
D-ATIS  
135.925  
CLNC DEL  
128.25  
CPDLC  
GND CON  
121.65 121.8 (EAST)  
121.85 (WEST)  
DFW TOWER  
126.55 127.5 (EAST)  
124.15 134.9 (WEST)

**TAKEOFF MINIMUMS**  
 Rwys 13L/R, 17L/C/R, 18L/R, 31L/R, 35L/C, 36L/R: Standard.  
 Rwy 35R: Standard with minimum climb of 245'/NM to 1200.



- NOTE: LUBBOCK Transition: For all aircraft overlying the MQP VORTAC westbound or direct.
- NOTE: MILLSAP Transition: For all aircraft overlying the MQP VORTAC westbound or direct.
- NOTE: PODDE Transition: ATC assigned.
- NOTE: WICHITA FALLS Transition: For all aircraft landing within the Wichita Falls terminal area or overlying the SPS VORTAC.
- NOTE: For all aircraft requesting 17000 and below.
- NOTE: Dallas-Fort Worth Intl Departures: Do not exceed 240K until leaving 5000.

NOTE: Chart not to scale.

(CONTINUED ON FOLLOWING PAGE)

# KINGDOM FOUR DEPARTURE

SC-2, 28 NOV 2024 to 26 DEC 2024