

(ZACHH4.ZACHH) 24305

AL-6039 (FAA)

DALLAS-FORT WORTH INTL (DFW)

ZACHH FOUR DEPARTURE (RNAV)

DALLAS-FORT WORTH, TEXAS

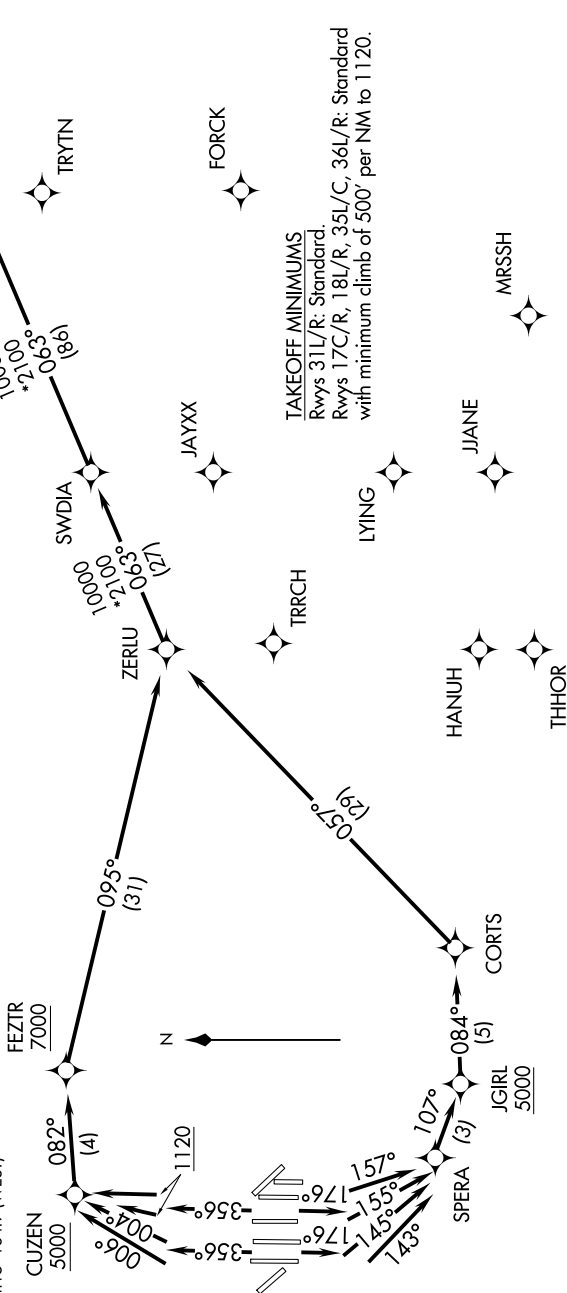
SC-2, 28 NOV 2024 to 26 DEC 2024

LONE STAR DEP CON
 118.55 290.35
 D-ATIS DEP
 135.925
 CLNC DEL
 128.25
 CPDLC
 GND CON
 121.65 121.8 (EAST)
 121.85 (WEST)
 DFW TOWER
 126.55 127.5 (EAST)
 124.15 134.9 (WEST)

RNAV 1 - DME/DME/IRU or GPS.
 RADAR required.

TOP ALTITUDE:
 RWYS 31L/R: 5000
 RWYS 17C/R, 18L/R,
 35L/C, 36L/R: 10000

NOTE: For use by turbojet aircraft only.
 NOTE: Non-RNAV capable props: file and expect DALLAS or GARLAND DEPARTURE.
 NOTE: RNAV capable props: file and expect the SWABR RNAV SID.



(CONTINUED ON FOLLOWING PAGE)

NOTE: Chart not to scale.

SC-2, 28 NOV 2024 to 26 DEC 2024

ZACHH FOUR DEPARTURE (RNAV)

(ZACHH4.ZACHH) 08SEP22

DALLAS-FORT WORTH, TEXAS

DALLAS-FORT WORTH INTL (DFW)