

WAAS CH 63129 W08A	APP CRS 082°	Rwy Idg 3501 TDZE 739 Apt Elev 741
--	------------------------	---

RNAV (GPS) RWY 8

MACKINAC ISLAND (MCD)

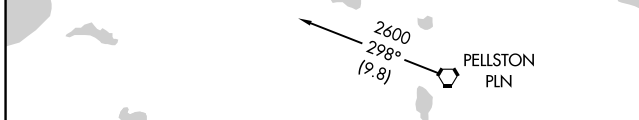
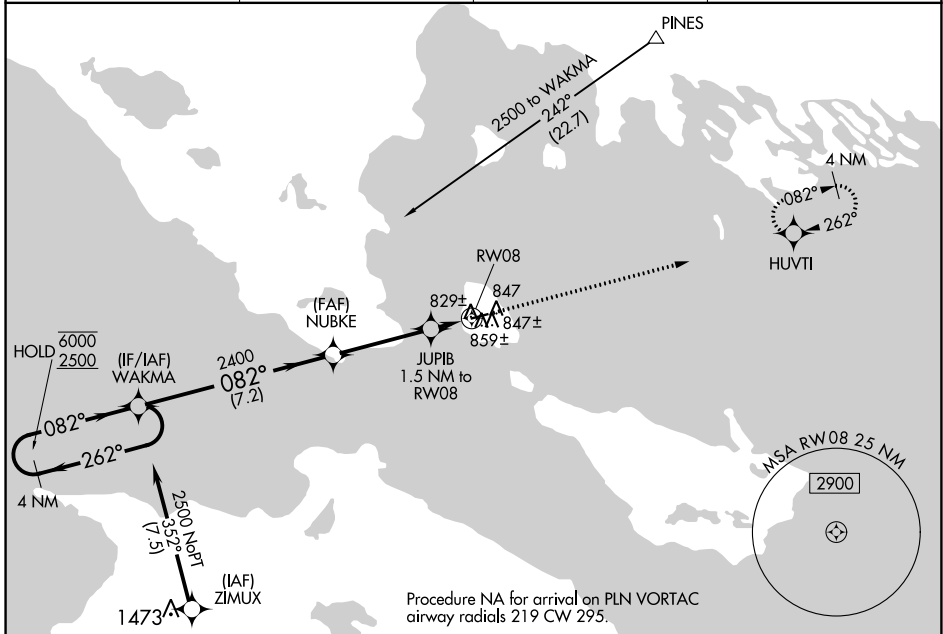
RNP APCH.

▼ Rwy 8 helicopter visibility reduction below 1 SM NA. When local altimeter setting not received, use Pellston altimeter setting and increase all MDA 60 feet, increase LP and LNAV Cat C visibility 1/8 SM and Circling Cat C visibility 1/4 SM. Straight-in and Circling Rwy 8 NA at night.

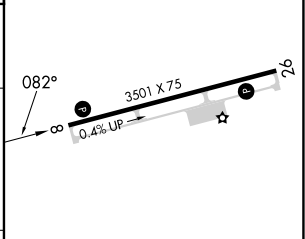
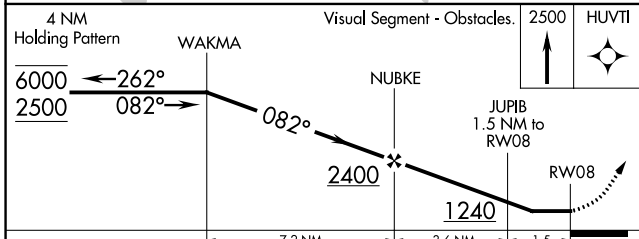
▲

MISSED APPROACH:
Climb to 2500 direct HUVTI and hold.

AWOS-3 118.275	MINNEAPOLIS CENTER 134.6 354.05	UNICOM 122.7 (CTAF)	122.8
--------------------------	---	-------------------------------	--------------



ELEV 741	TDZE 739
----------	----------



CATEGORY	A	B	C	D
LP MDA	1080-1 341 (400-1)			NA
LNAV MDA	1120-1	381 (400-1)	1120-1 1/8 381 (400-1 1/8)	NA
C CIRCLING	1320-1	579 (600-1)	1320-1 1/2 579 (600-1 1/2)	NA

MIRL Rwy 8-26 **1**
REIL Rwy 8 and 26 **1**

EC-1, 28 NOV 2024 to 26 DEC 2024

EC-1, 28 NOV 2024 to 26 DEC 2024