

NDB CSS 414	APP CRS 223°	Rwy Idg 5097
		TDZE 979
		Apt Elev 980

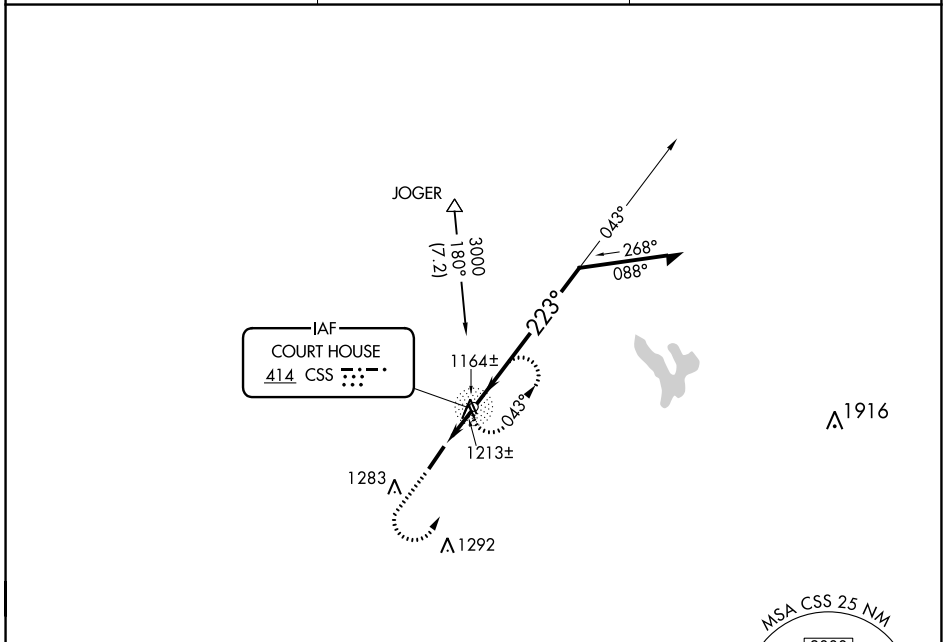
NDB RWY 23

FAYETTE COUNTY (I23)

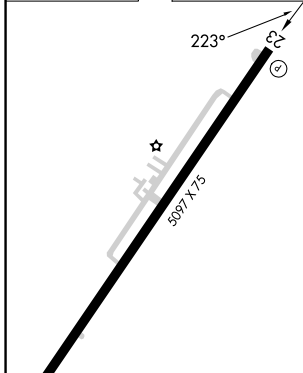
⚠ When local altimeter setting not received, use Wilmington Air Park altimeter setting and increase all MDAs 60 feet, and Circling visibility Cat C ¼ SM. Procedure NA at night. Rwy 23 helicopter visibility reduction below 1 SM NA.

MISSED APPROACH: Climb to 2000, then climbing left turn to 2600 direct CSS NDB and hold.

AWOS-3 118.775	COLUMBUS APP CON 134.0 279.6	UNICOM 122.8 (CTAF) 📻
--------------------------	--	--



ELEV	980	TDZE	979
------	-----	------	-----



2000 2600 CSS

↑ ↶ ○

CGSS NDB

Remain within 10 NM

043°

2600

223°

1700

≤ 3.48°

TCH 40

1.9 NM

VGSI and descent angles not coincident (VGSI Angle 3.00/TCH 26).

REIL Rwy 23 📻		MIRL Rwy 5-23 📻	
FAF to MAP 1.9 NM			
Knots	60	90	120 150 180
Min:Sec	1:54	1:16	0:57 0:46 0:38
📻 CIRCLING	1580-1 600 (600-1)	601 (600-1) 1640-1 660 (700-1)	1580-1¾ 601 (600-2) 1640-1¾ 1660-2¼ 680 (700-2¼)

EC-2, 28 NOV 2024 to 26 DEC 2024

EC-2, 28 NOV 2024 to 26 DEC 2024