

WAAS CH <b>53332</b> <b>W13A</b>	APP CRS <b>134°</b>	Rwy Idg TDZE Apt Elev	<b>4602</b> <b>1130</b> <b>1137</b>
--	------------------------	-----------------------------	---

# RNAV (GPS) RWY 13

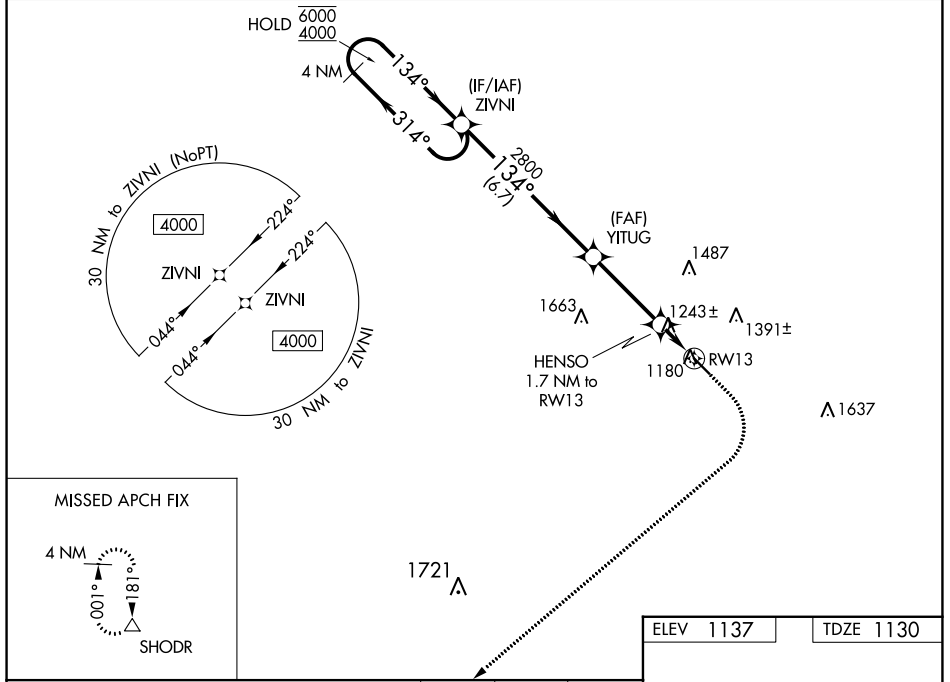
IOWA FALLS MUNI (IF A)

RNP APCH - GPS.

**⚠** For uncompensated Baro-VNAV systems, LNAV/VNAV NA below -17°C or above 54°C. Circling Rwy 31 NA at night.

MISSED APPROACH: Climb to 1600 then climbing right turn to 4000 direct SHODR and hold.

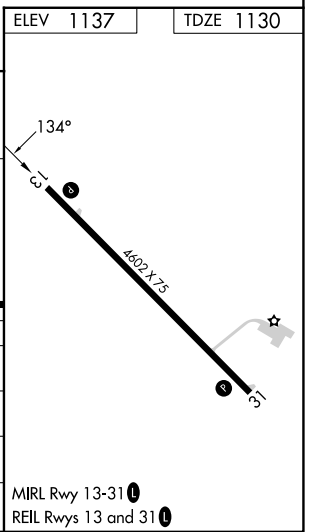
AWOS-3 <b>120.425</b>	WATERLOO APP CON * <b>118.9</b>	UNICOM <b>122.8 (CTAF)</b> <b>📶</b>
--------------------------	------------------------------------	--



VGSI and RNAV glidepath not coincident (VGSI Angle 3.00/TCH 44).

4 NM Holding Pattern	ZIVNI	YITUG	HENSO 1.7 NM to RWY 13	1 NM to RWY 13
6000 ← 314°		2800	1700	
4000 → 134°				
GP 3.00° TCH 40				
	6.7 NM	3.4 NM	0.7 NM	1 NM

CATEGORY	A	B	C	D
LPV DA		1380-1	250 (300-1)	
LNAV/VNAV DA		1395-1	265 (300-1)	
LNAV MDA		1500-1	370 (400-1)	
<b>📶</b> CIRCLING	1540-1 403 (500-1)	1620-1 483 (500-1)	1760-1¾ 623 (700-1¾)	1800-2 663 (700-2)



NC-3, 28 NOV 2024 to 26 DEC 2024

NC-3, 28 NOV 2024 to 26 DEC 2024