

(BLOKR7.BLOKR) 24305

AL-6063 (FAA)

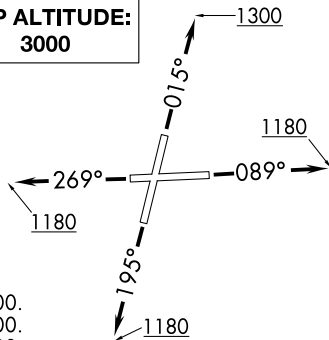
LEWIS UNIVERSITY (L.O.T)  
CHICAGO/ROMEOVILLE, ILLINOIS

# BLOKR SEVEN DEPARTURE (RNAV)

CHICAGO DEP CON  
119.35 354.075  
D-ATIS  
126.675  
GND CON  
120.425  
LEWIS TOWER ★  
134.8 (CTAF)

RNAV 1 - DME/DME/IRU or GPS.  
RADAR required. RADAR required for  
non-GPS equipped aircraft.

**TOP ALTITUDE:**  
**3000**

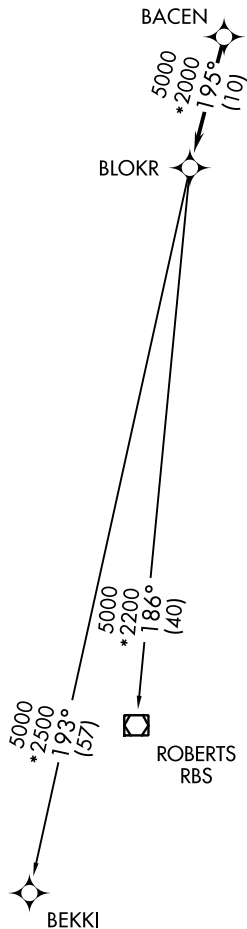
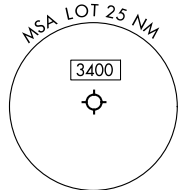


### TAKEOFF MINIMUMS:

- Rwy 2: Standard with minimum climb of 420' per NM to 2700.
- Rwy 9: Standard with minimum climb of 310' per NM to 2700.
- Rwy 20: Standard with minimum climb of 370' per NM to 2700.
- Rwy 27: Standard with minimum climb of 340' per NM to 2700.

NOTE: Turbojet departures maintain 250K until advised by ATC.

NOTE: ROBERTS Transition: For aircraft inbound to CMI or STL, or as assigned by ATC.



### DEPARTURE ROUTE DESCRIPTION

TAKEOFF RUNWAY 2: Climb on heading 015° to 1300, then as assigned by ATC, for vectors to BACEN, thence. . . .

TAKEOFF RUNWAY 9: Climb on heading 089° to 1180, then as assigned by ATC, for vectors to BACEN, thence. . . .

TAKEOFF RUNWAY 20: Climb on heading 195° to 1180, then as assigned by ATC, for vectors to BACEN, thence. . . .

TAKEOFF RUNWAY 27: Climb on heading 269° to 1180, then as assigned by ATC, for vectors to BACEN, thence. . . .

. . . .on track 195° to BLOKR, then on (transition). Maintain 3000. Expect filed altitude 10 minutes after departure.

BEKKI TRANSITION (BLOKR7.BEKKI):

ROBERTS TRANSITION (BLOKR7.RBS):

NOTE: Chart not to scale.

# BLOKR SEVEN DEPARTURE (RNAV)

(BLOKR7.BLOKR) 31OCT24

CHICAGO/ROMEOVILLE, ILLINOIS  
LEWIS UNIVERSITY (L.O.T)

EC-3, 28 NOV 2024 to 26 DEC 2024

EC-3, 28 NOV 2024 to 26 DEC 2024