

(ELANR7.ELANR) 24305

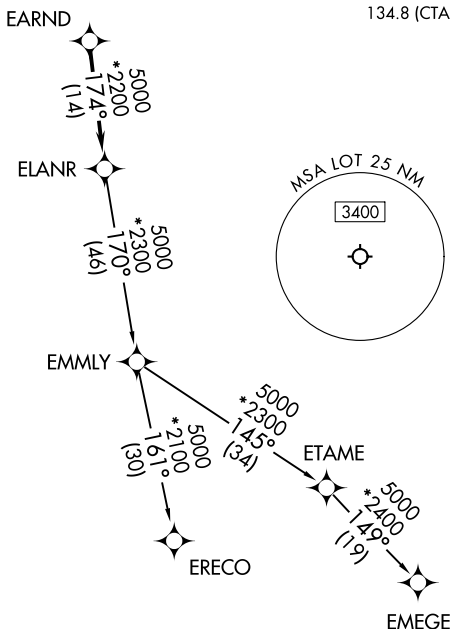
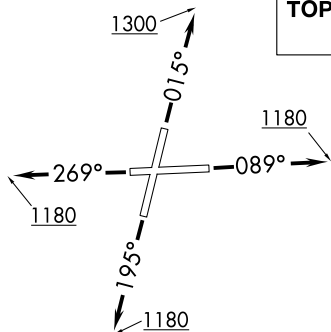
AL-6063 (FAA)

LEWIS UNIVERSITY (LOT)  
CHICAGO/ROMEOVILLE, ILLINOIS

# ELANR SEVEN DEPARTURE (RNAV)

**TOP ALTITUDE:  
3000**

CHICAGO DEP CON  
119.35 354.075  
D-ATIS  
126.675  
GND CON  
120.425  
LEWIS TOWER \*  
134.8 (CTAF)



### TAKEOFF MINIMUMS:

Rwys 9, 20, 27: Standard.  
Rwy 2: Standard with minimum  
climb of 420' per NM to 1200.

NOTE: Turbojet departures maintain  
250K until advised by ATC.  
NOTE: EMMLY Transition: For aircraft  
inbound to Indianapolis Terminal  
Area, or as assigned by ATC.

RNAV 1 - DME/DME/IRU or GPS.  
RADAR required.  
RADAR required for non-GPS equipped aircraft.

NOTE: Chart not to scale.

### DEPARTURE ROUTE DESCRIPTION

TAKEOFF RUNWAY 2: Climb on heading 015° to 1300, then as assigned by ATC, for vectors to EARND, thence. . . .  
TAKEOFF RUNWAY 9: Climb on heading 089° to 1180, then as assigned by ATC, for vectors to EARND, thence. . . .  
TAKEOFF RUNWAY 20: Climb on heading 195° to 1180, then as assigned by ATC, for vectors to EARND, thence. . . .  
TAKEOFF RUNWAY 27: Climb on heading 269° to 1180, then as assigned by ATC, for vectors to EARND, thence. . . .

. . . . on track 174° to ELANR, then on (transition), maintain 3000.  
Expect filed altitude 10 minutes after departure.

EMEGE TRANSITION (ELANR7.EMEGE):  
EMMLY TRANSITION (ELANR7.EMMLY):  
ERECO TRANSITION (ELANR7.ERECO):

ELANR SEVEN DEPARTURE (RNAV)  
(ELANR7.ELANR) 31OCT24

CHICAGO/ROMEOVILLE, ILLINOIS  
LEWIS UNIVERSITY (LOT)

EC-3, 28 NOV 2024 to 26 DEC 2024

EC-3, 28 NOV 2024 to 26 DEC 2024