

APP CRS 012°	Rwy Idg 5004
	TDZE 278
	Apt Elev 278

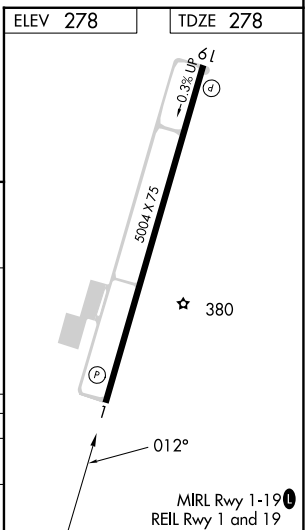
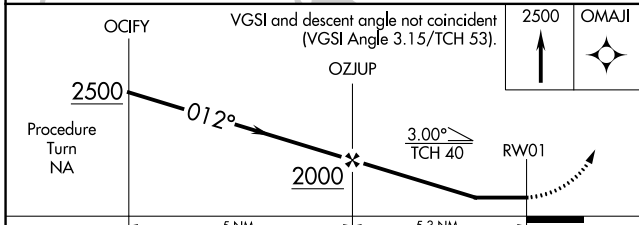
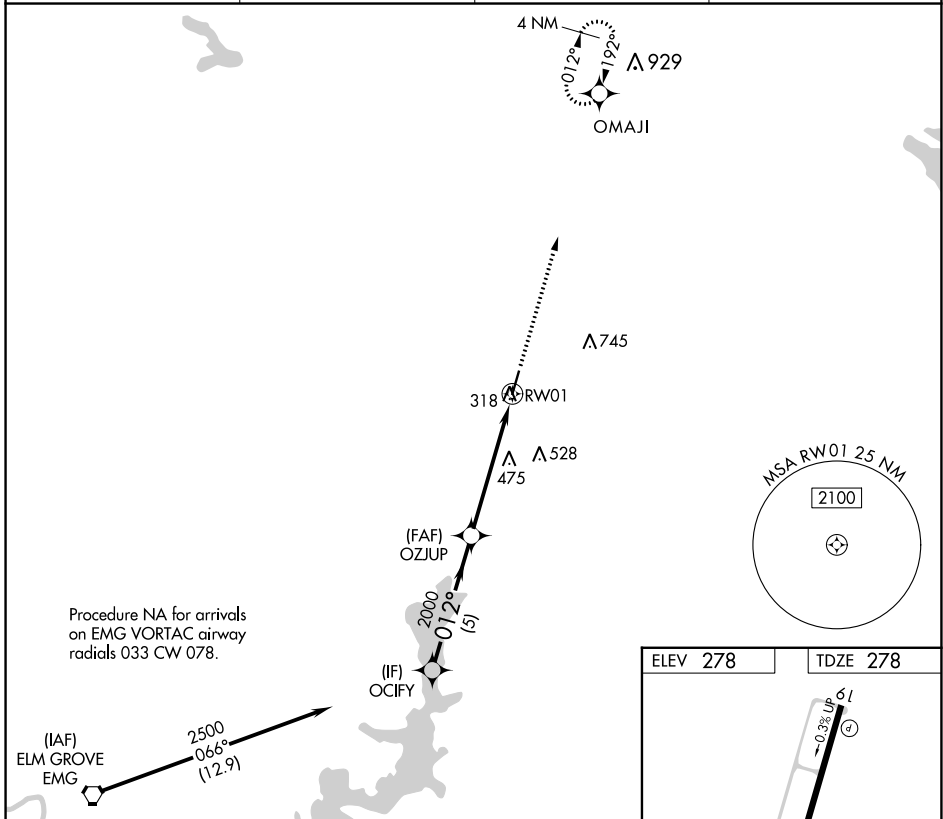
RNAV (GPS) RWY 1

MINDEN (MNE)

⚠ When VGSI inop, procedure NA at night. DME/DME RNP-0.3 NA. Helicopter visibility reduction below 1 SM NA. When local altimeter setting not received, use Barksdale AFB altimeter setting; increase all MDA 80 feet, increase LNAV visibility Cats C/D ½ SM and Circling visibility Cats C/D ¼ SM.

MISSED APPROACH: Climb to 2500 direct OMAJI and hold.

AWOS-3PT 119,325	SHREVEPORT APP CON 123.75 360.725	GCO 135.075	UNICOM 122.8 (CTAF)
----------------------------	---	-----------------------	-------------------------------



CATEGORY	A	B	C	D
LNAV MDA	780-1	502 (600-1)	780-1 $\frac{3}{8}$	502 (600-1 $\frac{3}{8}$)
CIRCLING	780-1 502 (600-1)	820-1 542 (600-1)	1060-2 $\frac{1}{4}$ 782 (800-2 $\frac{1}{4}$)	1060-2 $\frac{1}{2}$ 782 (800-2 $\frac{1}{2}$)

SC-4, 28 NOV 2024 to 26 DEC 2024

SC-4, 28 NOV 2024 to 26 DEC 2024