

WAAS CH 58321 W33A	APP CRS 330°	Rwy Idg TDZE Apt Elev	5000 1713 1718
--	------------------------	-----------------------------	---

RNAV (GPS) RWY 33

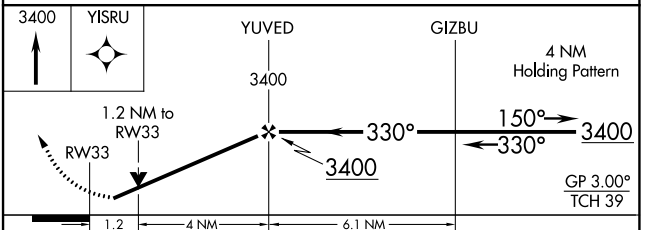
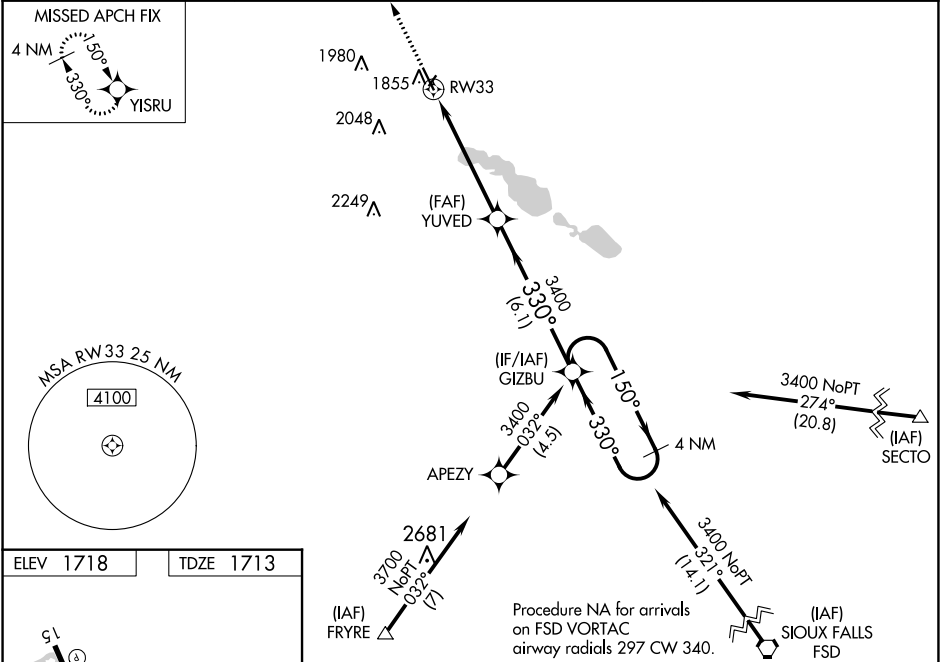
MADISON MUNI (MDS)

RNP APCH - GPS.

⚠ For uncompensated Baro-VNAV systems, LNAV/VNAV NA below -18°C or above 33°C. Rwy 33
 ⚠ helicopter visibility reduction below 3/4 SM NA. When local altimeter setting not received, use Brookings
 altimeter setting: increase LPV DA to 2021 feet; increase LNAV/VNAV DA to 2071 feet and all
 visibilities 1/4 SM; increase all MDAs 60 feet and visibility LNAV and Circling Cats C and D 1/4 SM.
 Circling NA to Rwy 3 and 21. Baro-VNAV NA when using Brookings altimeter setting.

MISSED APPROACH:
Climb to 3400 direct
YISRU and hold.

AWOS-3 118.35	MINNEAPOLIS CENTER 132.05 317.4	GCO 121.725	UNICOM 122.8 (CTAF)
-------------------------	---	-----------------------	-------------------------------



CATEGORY	A	B	C	D
LPV DA	1963-1 250 (300-1)			
LNAV/VNAV DA	2013-1 300 (300-1)			
LNAV MDA	2120-1	407 (500-1)	2120-1 1/8	407 (500-1 1/8)
CIRCLING	2180-1	462 (500-1)	2400-2 682 (700-2)	2400-2 1/4 682 (700-2 1/4)

NC-1, 28 NOV 2024 to 26 DEC 2024

NC-1, 28 NOV 2024 to 26 DEC 2024