

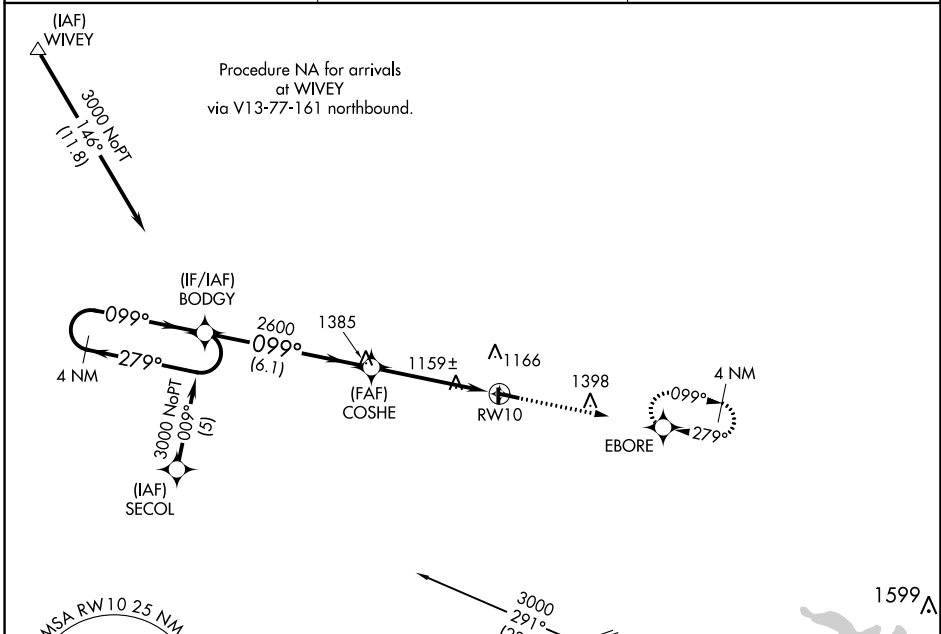
APP CRS	Rwy Idg	4000
099°	TDZE	1046
	Apt Elev	1051

RNAV (GPS) RWY 10

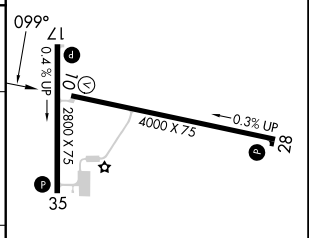
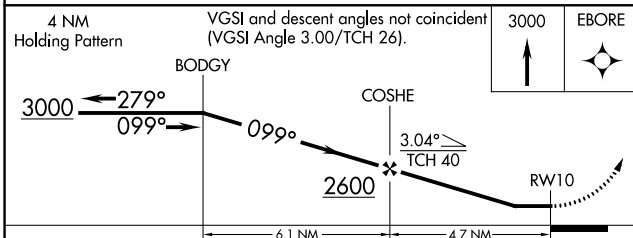
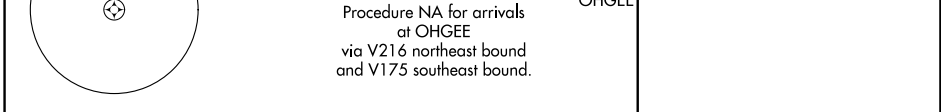
CHARITON MUNI (CNC)

RNP APCH.	<p>When local altimeter setting not received, use Lomoni altimeter setting and increase all MDA 100 feet. Procedure NA at night. Rwy 10 helicopter visibility reduction below 1 SM NA.</p>	<p>MISSED APPROACH: Climb to 3000 direct EBORE and hold.</p>
-----------	--	--

AWOS-3 125.525	DES MOINES APP CON 123.9 360.7	UNICOM 122.8 (CTAF) 0
--------------------------	--	---------------------------------



ELEV 1051	TDZE 1046
-----------	-----------



CATEGORY	A	B	C	D
RNAV MDA	1440-1	394 (400-1)		NA
CIRCLING	1540-1	489 (500-1)		NA

REIL Rwy 10, 17, 28 and 35 0

MIRL Rwy 10-28 and 17-35 0

NC-3, 28 NOV 2024 to 26 DEC 2024

NC-3, 28 NOV 2024 to 26 DEC 2024