

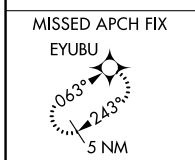
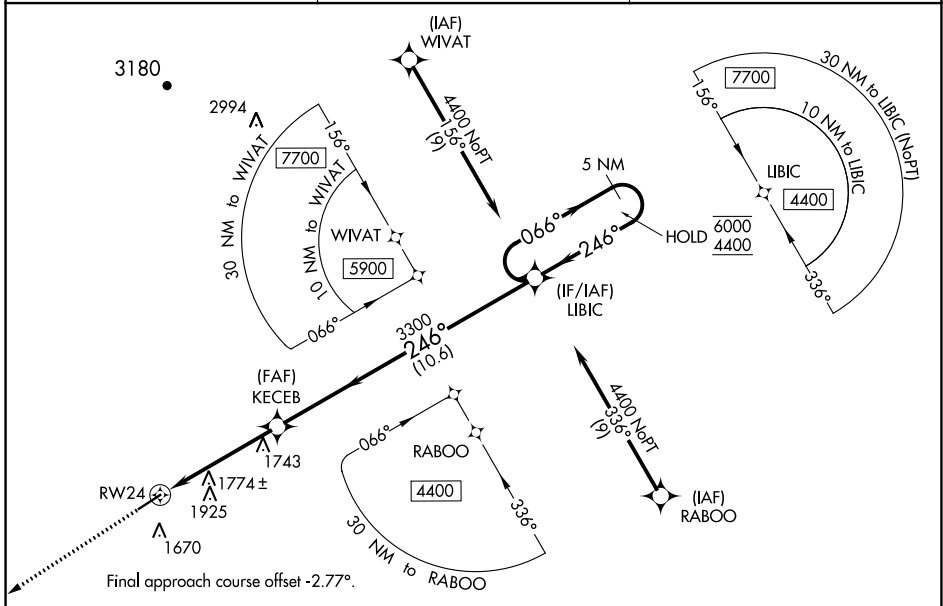
WAAS CH <b>49121</b> <b>W24A</b>	APP CRS <b>246°</b>	Rwy Idg <b>5503</b> TDZE <b>1448</b> Apt Elev <b>1448</b>
--	------------------------	---

# RNAV (GPS) RWY 24

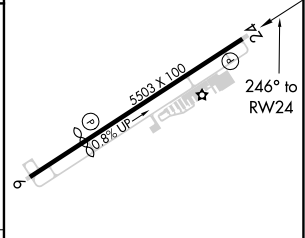
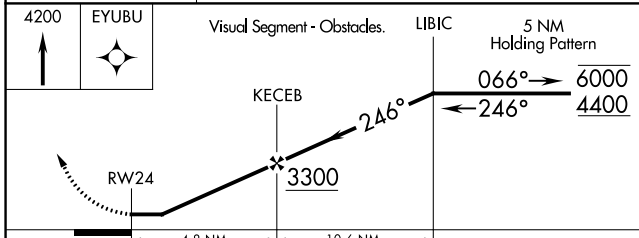
HABERSHAM COUNTY (AJR)

RNP APCH - GPS.		MISSED APPROACH: Climb to 4200 direct EYUBU and hold.
	Rwy 24 helicopter visibility reduction below 1 SM NA. Procedure NA at night.	

AWOS-3 <b>119.175</b>	ATLANTA CENTER <b>134.8 379.95</b>	UNICOM <b>122.7 (CTAF) 0</b>
--------------------------	---------------------------------------	---------------------------------



ELEV 1448	<b>D</b>	TDZE 1448
-----------	----------	-----------



CATEGORY	A	B	C	D
LP MDA	2000-1	552 (600-1)	2000-1 <sup>5</sup> / <sub>8</sub>	552 (600-1 <sup>5</sup> / <sub>8</sub> )
LNAV MDA	2040-1	592 (600-1)	2040-1 <sup>3</sup> / <sub>4</sub>	592 (600-1 <sup>3</sup> / <sub>4</sub> )
<b>C</b> CIRCLING	2100-1 652 (700-1)	2280-1 <sup>1</sup> / <sub>4</sub> 832 (900-1 <sup>1</sup> / <sub>4</sub> )	2280-2 <sup>1</sup> / <sub>2</sub> 832 (900-2 <sup>1</sup> / <sub>2</sub> )	2280-2 <sup>3</sup> / <sub>4</sub> 832 (900-2 <sup>3</sup> / <sub>4</sub> )

MIRL Rwy 6-24 0

SE-4, 28 NOV 2024 to 26 DEC 2024

SE-4, 28 NOV 2024 to 26 DEC 2024