

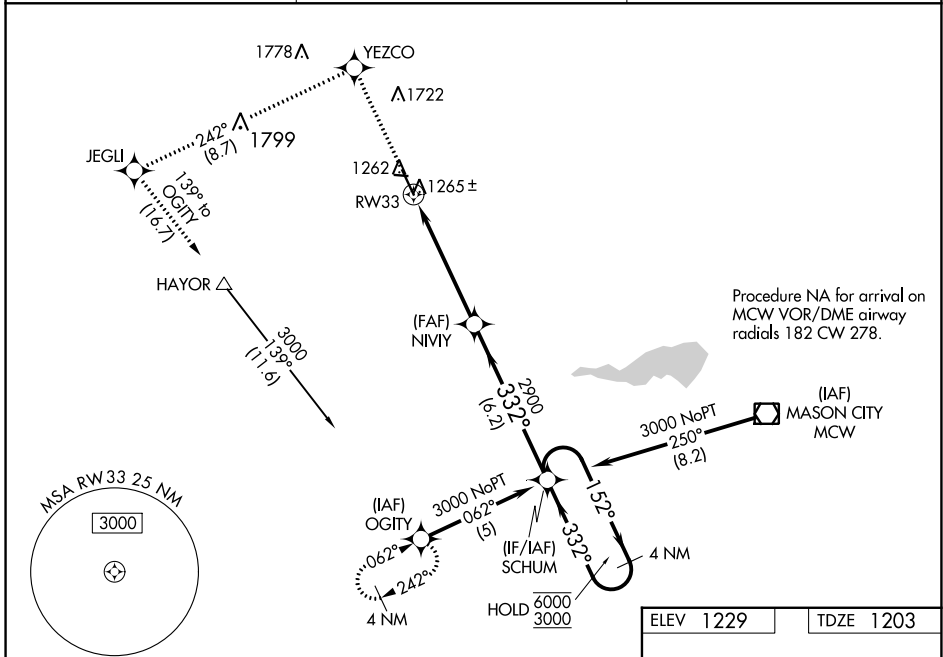
WAAS CH 78016 W33A	APP CRS 332°	Rwy Idg 5796 TDZE 1203 Apt Elev 1229
--	------------------------	---

RNAV (GPS) RWY 33

FOREST CITY MUNI/TRIMBLE FLD (FXY)

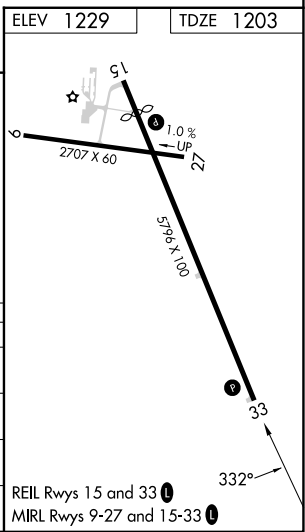
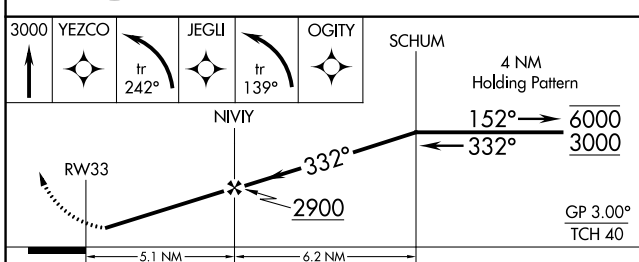
RNP APCH - GPS.	MISSED APPROACH: Climb to 3000 direct YEZCO and left turn on track 242° to JEGLI and left turn on track 139° to OGITY and hold.
<p>⚠ Rwy 33 helicopter visibility reduction below 1 SM NA.</p> <p>⚠ For uncompensated Baro-VNAV systems, LNAV/VNAV NA below -17°C or above 54°C. Straight-in Rwy 33 NA at night, Circling Rwy 9, 27, 33 NA at night.</p>	

AWOS-3 123.925	MINNEAPOLIS CENTER 127.3 257.675	UNICOM 122.8 (CTAF) 0
--------------------------	--	---------------------------------



NC-3, 28 NOV 2024 to 26 DEC 2024

NC-3, 28 NOV 2024 to 26 DEC 2024



CATEGORY	A	B	C	D
LPV DA		1453-1	250 (300-1)	
LNAV/VNAV DA		1535-1¼	332 (400-1¼)	
LNAV MDA		1520-1	317 (300-1)	
CIRCLING	1660-1 431 (500-1)	1760-1 531 (600-1)	2040-2½ 811 (900-2½)	2040-2¾ 811 (900-2¾)

REIL Rws 15 and 33 0
MIRL Rws 9-27 and 15-33 0