

| | | |
|--|------------------------|---|
| WAAS CH 70723 W30A | APP CRS 300° | Rwy Idg TDZE 1222 Apt Elev 1226 |
|--|------------------------|---|

RNAV (GPS) RWY 30

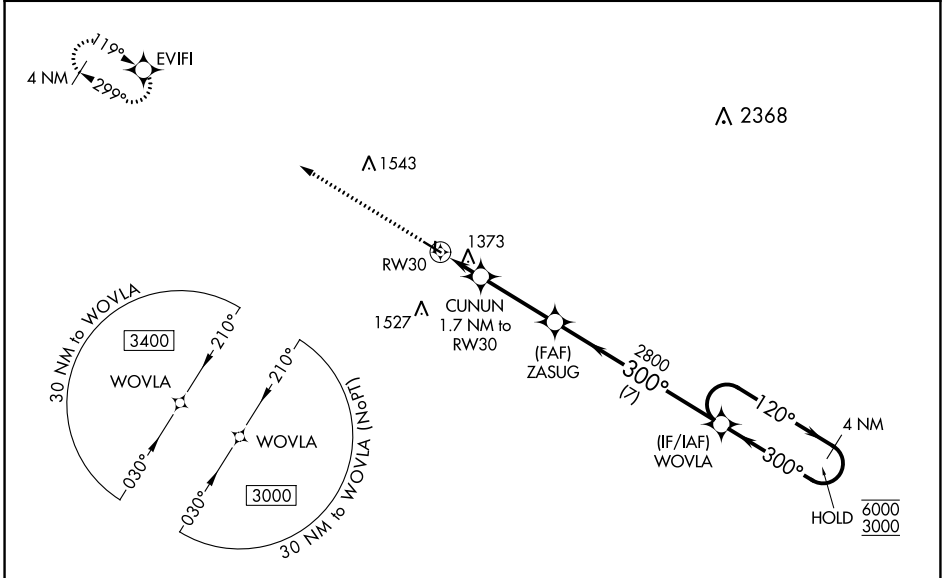
POCAHONTAS MUNI (POH)

RNP APCH.

NA Circling NA to Rws 18 and 36. Circling Rwy 12 NA at night. Rwy 30 helicopter visibility reduction below 3/4 SM NA. Use Algona altimeter setting; when not received, use Fort Dodge altimeter setting; increase LPV all Cats DA to 1536 feet, LNAV/VNAV all Cats DA to 1784 feet; increase all MDA 20 feet and LNAV Cat C visibility 1/8 SM. Baro-VNAV NA.

MISSED APPROACH: Climb to 3000 direct EVIFI and hold.

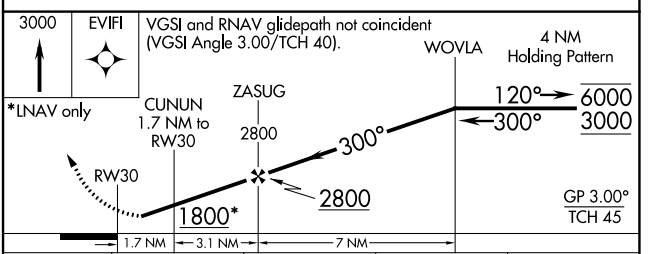
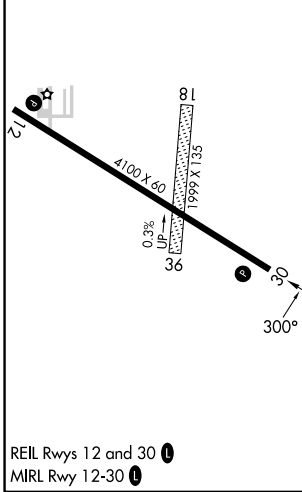
| | | |
|------------------------------|--|-------------------------------|
| AXA AWOS-3 118.475 | MINNEAPOLIS CENTER 134.0 288.3 | UNICOM 122.8 (CTAF) |
|------------------------------|--|-------------------------------|



NC-3, 28 NOV 2024 to 26 DEC 2024

NC-3, 28 NOV 2024 to 26 DEC 2024

| | |
|-----------|-----------|
| ELEV 1226 | TDZE 1222 |
|-----------|-----------|



| CATEGORY | A | B | C | D |
|--------------|-------------------------|-----------------------|-------------------------|----|
| LPV DA | 1534-1 312 (400-1) | | | NA |
| LNAV/VNAV DA | 1782-1 5/8 560 (600-1%) | | | NA |
| LNAV MDA | 1740-1 | 518 (600-1) | 1740-1 3/8 518 (600-1%) | NA |
| CIRCLING | 1800-1 574 (600-1) | 1940-1 714 (800-1) | 1940-2 714 (800-2) | NA |