

WAAS CH 70713 W05A	APP CRS 050°	Rwy Idg TDZE Apt Elev	5002 757 757
----------------------------------------	------------------------	-----------------------------	-----------------------------------------

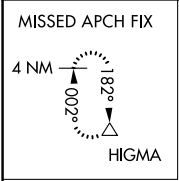
RNAV (GPS) RWY 5

NORTH VERNON (0VO)

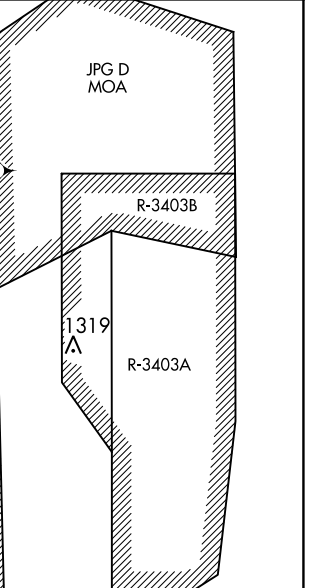
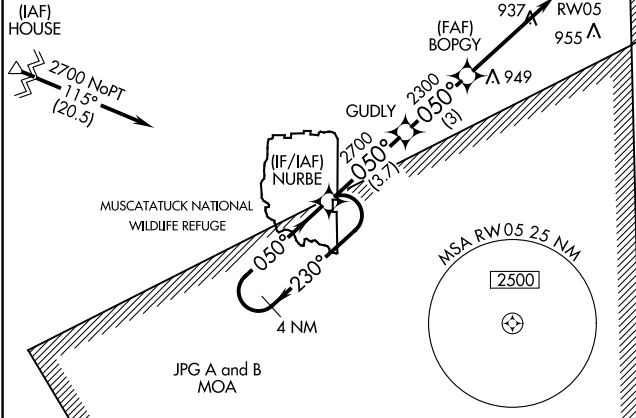
NA For uncompensated Baro-VNAV systems, LNAV/VNAV NA below -16°C (4°F) or above 54°C (130°F). DME/DME RNP-0.3 NA. When local altimeter setting not received, use Shelbyville altimeter setting and increase LPV DA to 1175, LNAV/VNAV DA to 1200, and all MDAs 100 feet. Increase LPV all Cats visibility 1/8 SM, LNAV/VNAV and LNAV and Circling Cat C visibility 1/4 SM. VDP and Baro-VNAV NA when using Shelbyville altimeter setting. Helicopter visibility reduction below 3/4 SM NA.

MISSED APPROACH:
Climb to 2800 direct KONVY and on track 353° to HIGMA and hold.

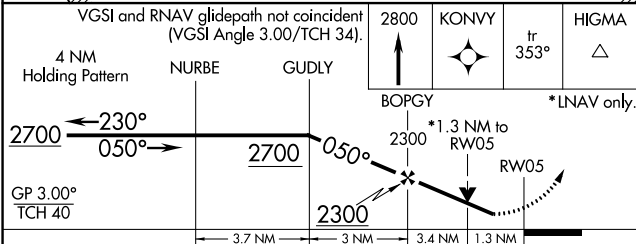
AWOS-3 120.625	INDIANAPOLIS APP CON 134.85 317.8	UNICOM 122.7 (CTAF)
--------------------------	---------------------------------------------	-------------------------------



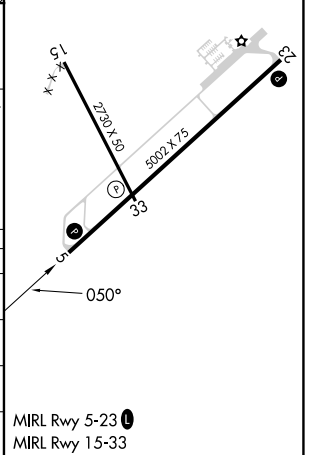
Procedure NA for arrivals at HOUSE via V53 northwest bound.



ELEV 757	TDZE 757
----------	----------



CATEGORY	A	B	C	D
LPV DA	1091-1¼	334 (400-1¼)		NA
LNAV/VNAV DA	1116-1¼	359 (400-1¼)		NA
LNAV MDA	1200-1	443 (500-1)	1200-1⅜ 443 (500-1⅜)	NA
CIRCLING	1200-1 443 (500-1)	1300-1 543 (600-1)	1300-1½ 543 (600-1½)	NA



MIRL Rwy 5-23
MIRL Rwy 15-33