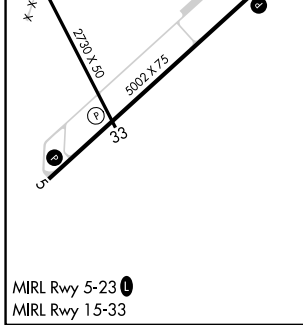
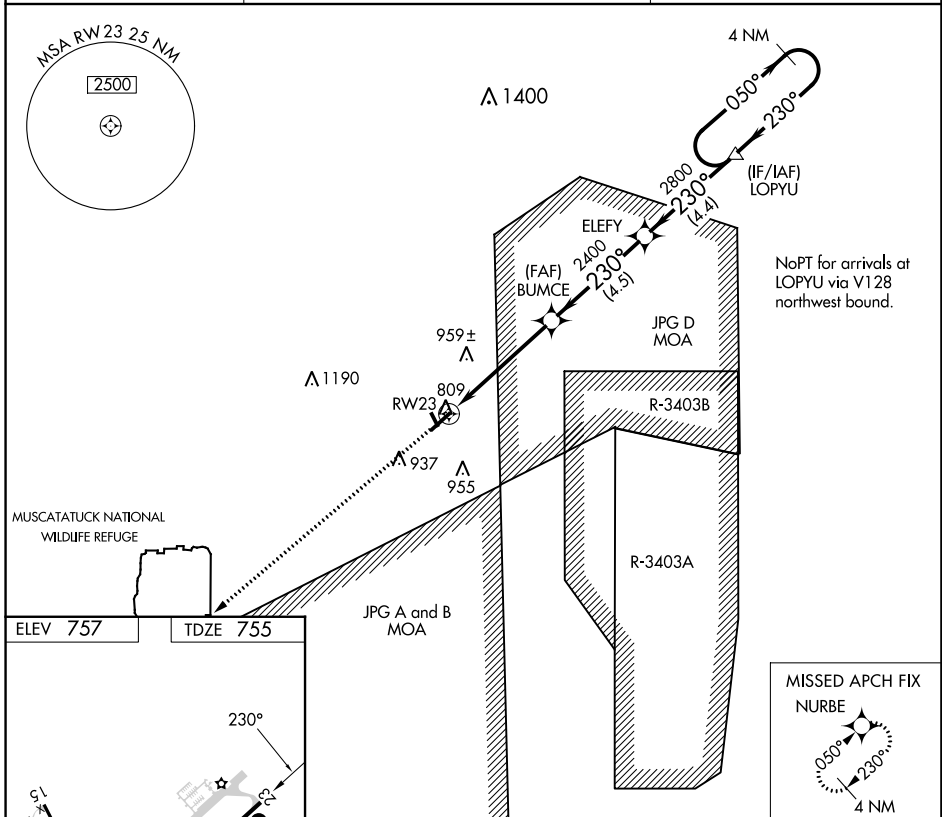


WAAS CH <b>63113</b> <b>W23A</b>	APP CRS <b>230°</b>	Rwy Idg TDZE Apt Elev	<b>5002</b> <b>755</b> <b>757</b>
--	------------------------	-----------------------------	---

# RNAV (GPS) Z RWY 23

NORTH VERNON (OVO)

<p><b>NA</b> DME/DME RNP-0.3 NA. When local altimeter setting not received, use Shelbyville altimeter setting and increase all DA 84 feet and all visibility 1/4 mile.</p>	<p>MISSED APPROACH: Climb to 2700 direct NURBE and hold.</p>	
<p>AWOS-3 <b>120.625</b></p>	<p>INDIANAPOLIS APP CON <b>134.85 317.8</b></p>	<p>UNICOM <b>122.7 (CTAF)</b></p>



<p>2700 ↑ NURBE</p>	<p>VGSI and RNAV glidepath not coincident (VGSI Angle 3.00/TCH 27).</p>	<p>4 NM Holding Pattern</p>	
<p>BUMCE</p>	<p>ELEFY</p>	<p>LOPYU</p>	
<p>RWY 23</p>	<p>2400</p>	<p>2800</p>	
<p>5 NM</p>	<p>4.5 NM</p>	<p>4.4 NM</p>	
<p>CATEGORY A</p>	<p>B</p>	<p>C</p>	<p>D</p>
<p>LPV DA</p>	<p>1005-1 250 (300-1)</p>	<p>NA</p>	<p>GP 3.00° TCH 40</p>

EC-2, 28 NOV 2024 to 26 DEC 2024

EC-2, 28 NOV 2024 to 26 DEC 2024