

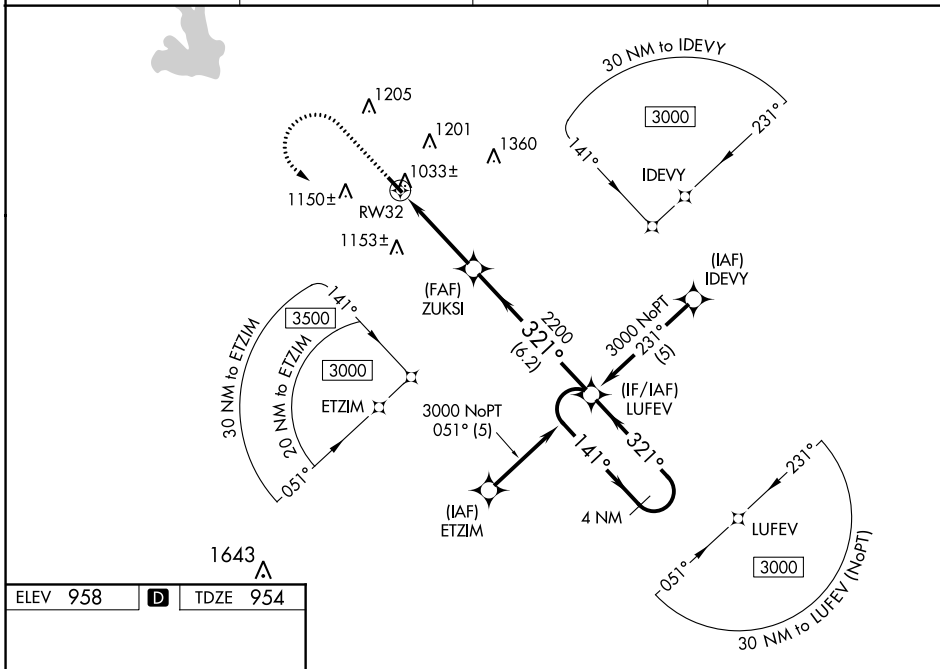
WAAS CH 65729 W32A	APP CRS 321°	Rwy Idg TDZE Apt Elev	3273 954 958
--	------------------------	-----------------------------	---

RNAV (GPS) RWY 32

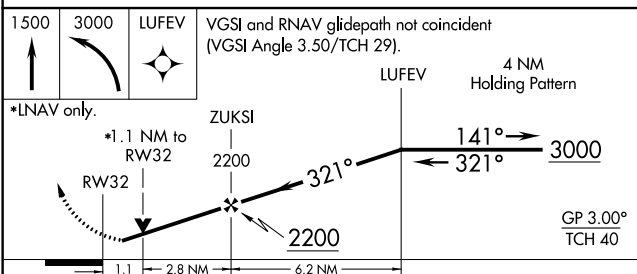
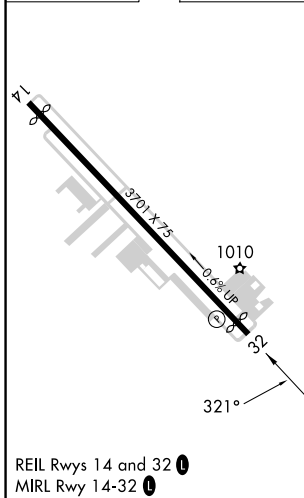
GRIFFIN-SPALDING COUNTY (6A2)

RNP APCH.	<p>▼ For uncompensated Baro-VNAV systems, LNAV/VNAV NA below -16°C or above 54°C. ▲ NA Rwy 32 helicopter visibility reduction below 3/4 SM NA. Baro-VNAV and VDP NA with Atlanta Rgnl Falcon Fld altimeter setting. When local altimeter setting not received, use Atlanta Rgnl Falcon Fld altimeter setting and increase all DA/MDA 60 feet; increase LPV and LNAV/VNAV all Cats visibility 1/2 mile.</p>	MISSED APPROACH: Climb to 1500 then climbing left turn to 3000 direct LUFEV and hold.
-----------	---	---

AWOS-3 119.750	ATLANTA APP CON 128.575 343.675	CLNC DEL 128.575 343.675	UNICOM 123.075 (CTAF) 0
--------------------------	---	------------------------------------	--



ELEV 958	D	TDZE 954
----------	----------	----------



CATEGORY	A	B	C	D
LPV DA	1204-7/8	250 (300-7/8)		NA
LNAV/VNAV DA	1204-7/8	250 (300-7/8)		NA
LNAV MDA	1300-1	346 (400-1)		NA

SE-4, 28 NOV 2024 to 26 DEC 2024

SE-4, 28 NOV 2024 to 26 DEC 2024