

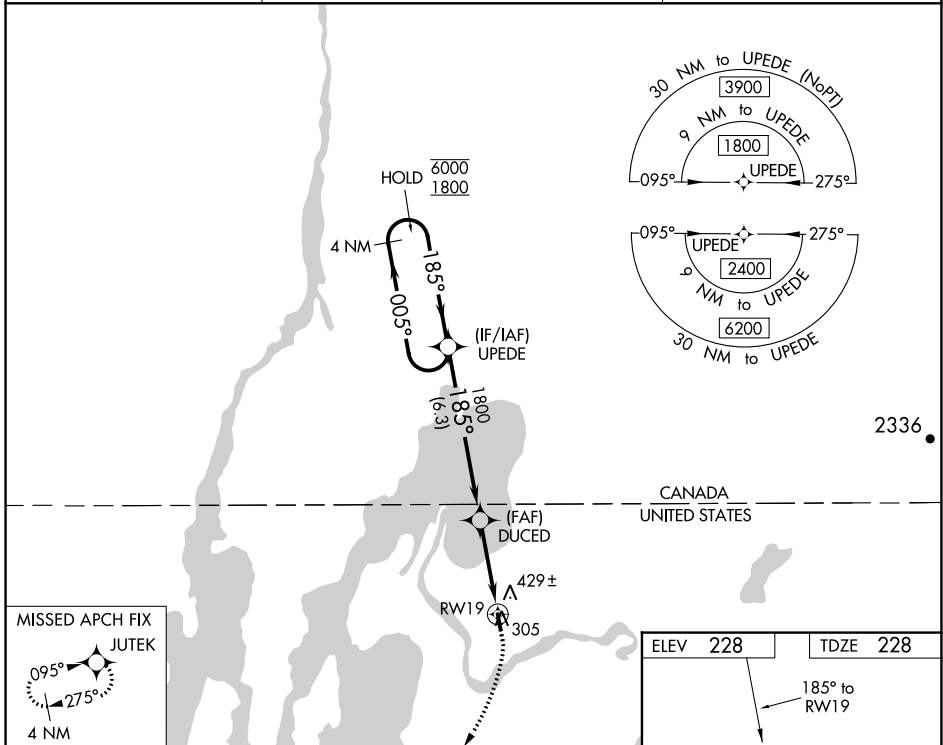
WAAS CH <b>78122</b> <b>W19A</b>	APP CRS <b>185°</b>	Rwy Idg TDZE <b>228</b> Apt Elev <b>228</b>	<b>3001</b>
--	------------------------	---	-------------

# RNAV (GPS) RWY 19

FRANKLIN COUNTY STATE (F'SO)

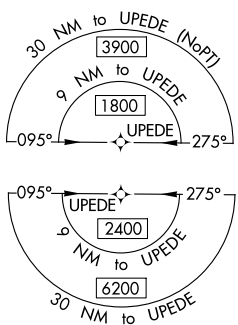
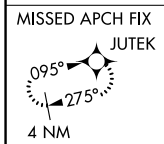
RNP APCH - GPS.		MISSED APPROACH: Climb to 700 then climbing right turn to 3000 direct JUTEK and hold.
Procedure NA at night. Rwy 19 helicopter visibility reduction below 1 SM NA.		

AWOS-3 <b>119.025</b>	BURLINGTON APP CON * <b>121.1</b> (EAST) <b>278.8</b> (WEST) <b>360.8</b>	UNICOM <b>122.8</b> (CTAF)
--------------------------	---	-------------------------------

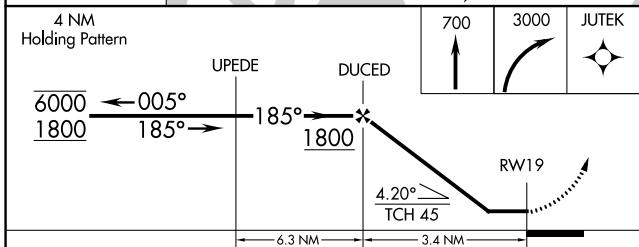
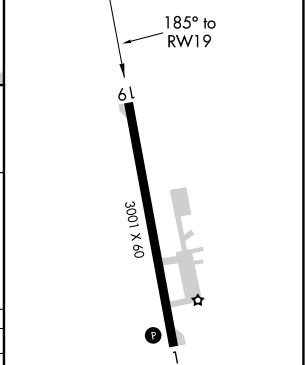


NE-1, 28 NOV 2024 to 26 DEC 2024

NE-1, 28 NOV 2024 to 26 DEC 2024



ELEV <b>228</b>	TDZE <b>228</b>
-----------------	-----------------



CATEGORY	A	B	C	D
LP MDA	640-1	412 (500-1)	NA	
LNAV MDA	680-1	452 (500-1)	NA	
CIRCLING	760-1 532 (600-1)	960-1 732 (800-1)	NA	

MIRL Rwy 1-19   
REIL Rws 1 and 19