

WAAS CH <b>86532</b> <b>W33A</b>	APP CRS <b>332°</b>	Rwy Idg TDZE <b>1125</b> Apt Elev <b>1127</b>	<b>3399</b>
--	------------------------	---	-------------

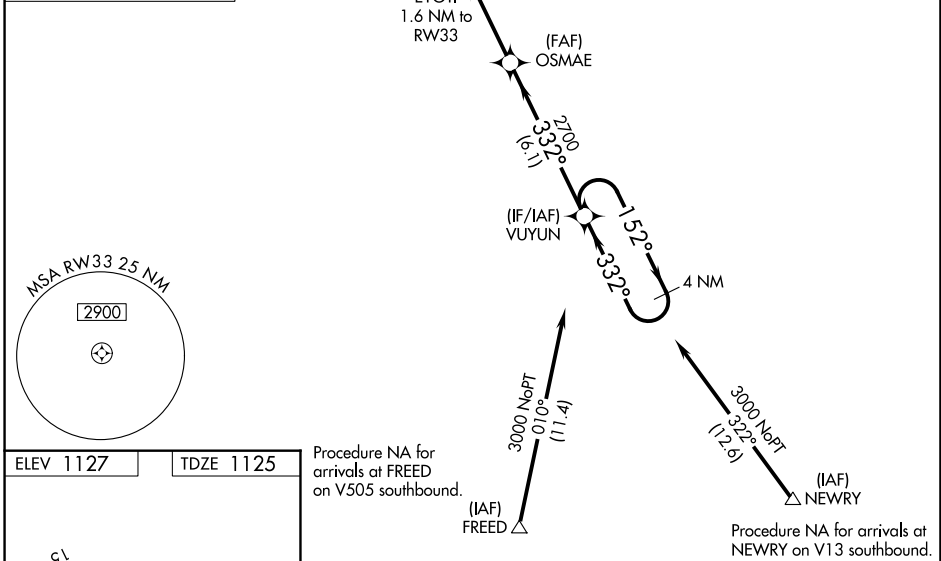
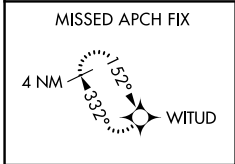
# RNAV (GPS) RWY 33

WASECA MUNI/MAYNARD RICHARD STENSRUD FLD (ACQ)

**⚠** When local altimeter setting not received, use Owatonna altimeter setting and increase all MDAs 40 feet, increase LP and LNAV Cat C visibility 1/8 mile and Circling Cat C visibility 1/8 mile. DME/DME RNP-0.3 NA. Procedure NA at night. Helicopter visibility reduction below 1 SM NA.

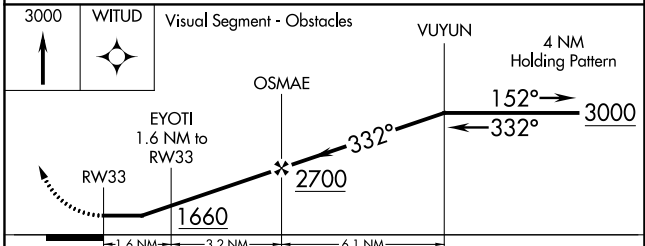
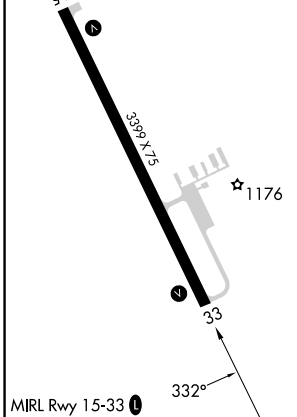
MISSED APPROACH: Climb to 3000 direct WITUD and hold.

AWOS-3 <b>118.425</b>	MINNEAPOLIS CENTER <b>135.0 306.9</b>	UNICOM <b>122.8 (CTAF) 0</b>
--------------------------	--	---------------------------------



NC-1, 28 NOV 2024 to 26 DEC 2024

NC-1, 28 NOV 2024 to 26 DEC 2024



CATEGORY	A	B	C	D
LP MDA	1480-1	355 (400-1)		NA
LNAV MDA	1520-1	395 (400-1)	1520-1 1/8 395 (400-1 1/8)	NA
<b>C</b> CIRCLING	1560-1 433 (500-1)	1620-1 493 (500-1)	1760-1 1/2 633 (700-1 1/2)	NA

# RNAV (GPS) RWY 33