

WAAS CH <b>58005</b> <b>W19A</b>	APP CRS <b>187°</b>	Rwy Idg TDZE <b>749</b> Apt Elev <b>759</b>	<b>5760</b>
--	------------------------	---	-------------

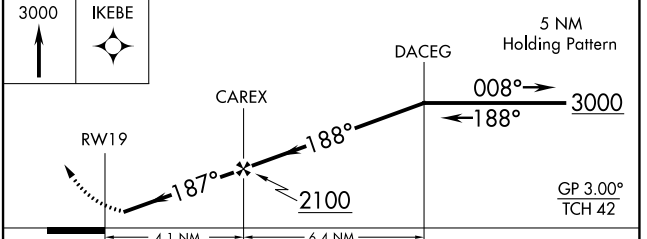
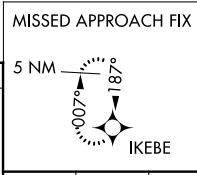
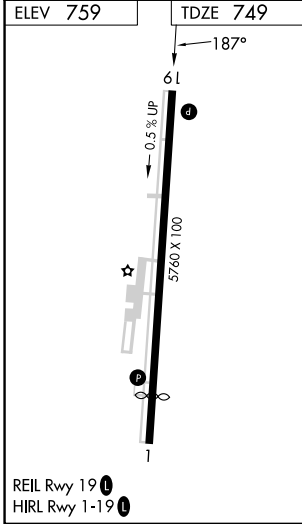
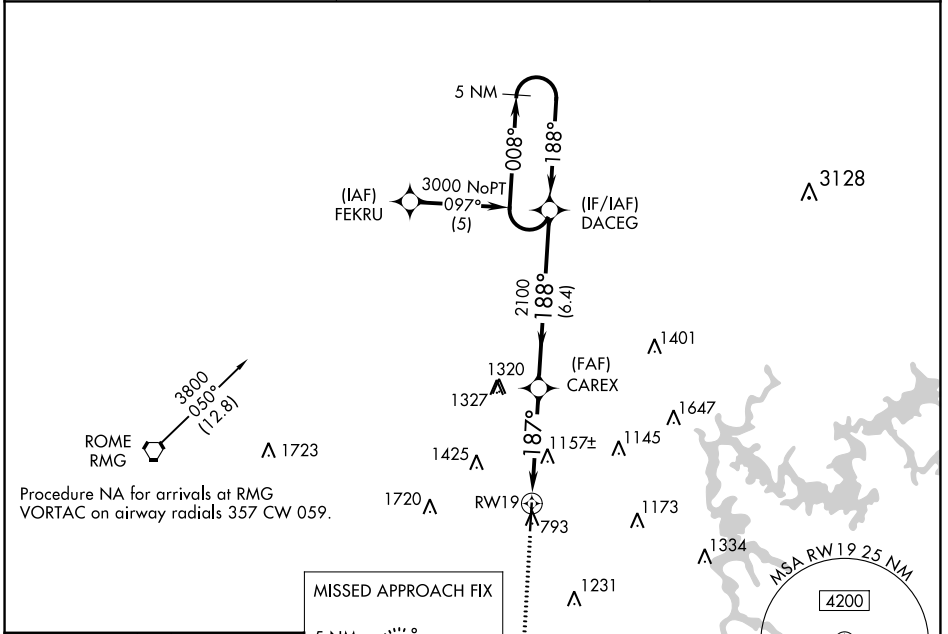
# RNAV (GPS) RWY 19

CARTERSVILLE (VPC)

**⚠** When local alimeter setting not received, use Rome alimeter setting and increase LPV DA to 1072 and all MDA 80 feet; increase LNAV MDA Cat B visibility 1/4 SM and Cat C/D visibility 1/8 SM. DME/DME RNP-0.3 NA. Rwy 19 helicopter visibility reduction below 3/4 SM NA.

**MISSED APPROACH:** Climb to 3000 direct IKEBE and hold.

AWOS-3PT <b>120.525</b>	ATLANTA APP CON <b>121.0 268.7</b>	UNICOM <b>122.7 (CTAF)</b>
----------------------------	---------------------------------------	-------------------------------



CATEGORY	A	B	C	D
LPV DA	1008-1 259 (300-1)			
LNAV MDA	1420-1	671 (700-1)	1420-1 1/8	671 (700-1 1/8)
CIRCLING	1420-1 661 (700-1)	1600-1 1/4 841 (900-1 1/4)	1740-3 981 (1000-3)	2020-3 1261 (1300-3)

SE-4, 28 NOV 2024 to 26 DEC 2024

SE-4, 28 NOV 2024 to 26 DEC 2024