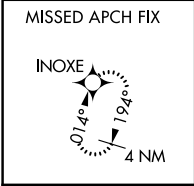
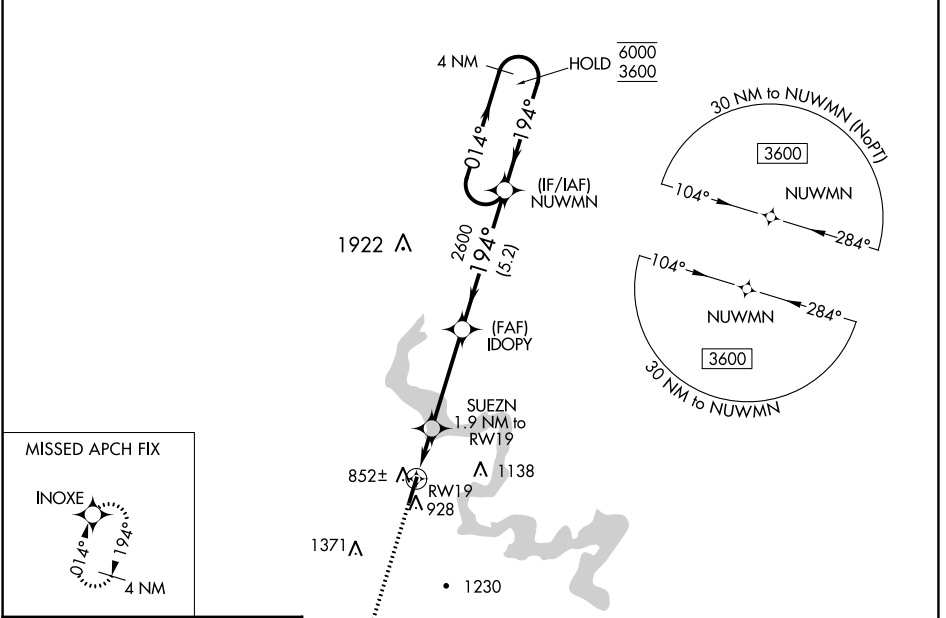


WAAS CH <b>82144</b> <b>W19A</b>	APP CRS <b>194°</b>	Rwy ldg <b>5201</b> TDZE <b>813</b> Apt Elev <b>835</b>
--	------------------------	---

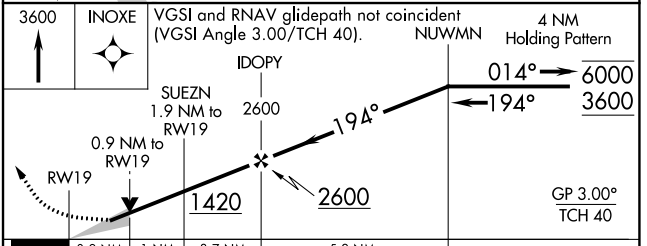
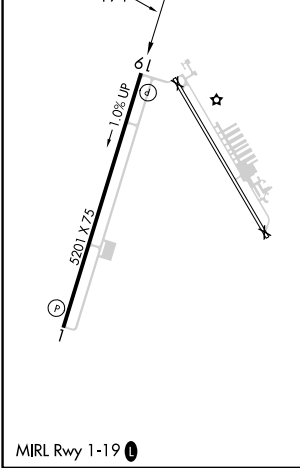
# RNAV (GPS) RWY 19

GRANBURY RGNL (GDJ)

RNP APCH - GPS.		MISSED APPROACH: Climb to 3600 direct INOXE and hold, continue climb-in-hold to 3600.
<p><b>▼</b> For uncompensated Baro-VNAV systems, LNAV/VNAV NA below -16°C or above 54°C.</p> <p><b>▲</b></p>		
AWOS-3PT <b>118.925</b>	FORT WORTH CENTER <b>127.15 314.0</b>	UNICOM <b>123.0 (CTAF) 0</b>



ELEV <b>835</b>	TDZE <b>813</b>
-----------------	-----------------



CATEGORY	A	B	C	D
LPV DA	1013- <sup>3</sup> / <sub>4</sub>		200 (200- <sup>3</sup> / <sub>4</sub> )	NA
LNAV/VNAV DA	1063- <sup>3</sup> / <sub>4</sub>		250 (300- <sup>3</sup> / <sub>4</sub> )	NA
LNAV MDA	1120-1	307 (300-1)	1120- <sup>7</sup> / <sub>8</sub> 307 (300- <sup>7</sup> / <sub>8</sub> )	NA
<b>C</b> CIRCLING	1360-1 525 (600-1)	1380-1 545 (600-1)	1680-2 <sup>1</sup> / <sub>2</sub> 845 (900-2 <sup>1</sup> / <sub>2</sub> )	NA

SC-2, 28 NOV 2024 to 26 DEC 2024

SC-2, 28 NOV 2024 to 26 DEC 2024