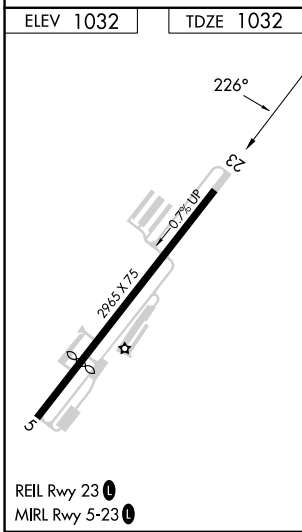
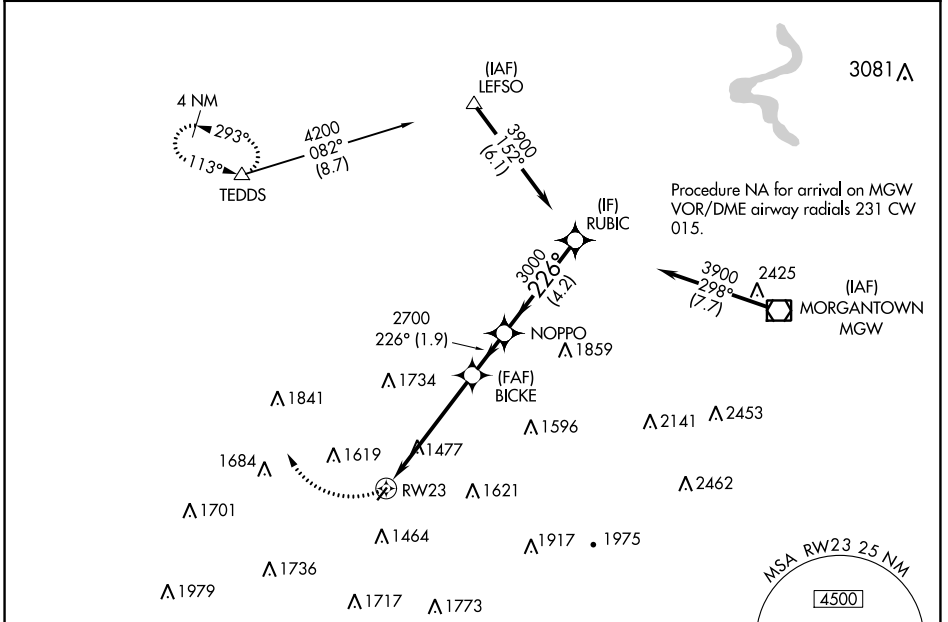


APP CRS <b>226°</b>	Rwy Idg <b>2965</b>
	TDZE <b>1032</b>
	Apt Elev <b>1032</b>

# RNAV (GPS) RWY 23

FAIRMONT MUNI-FRANKMAN FLD (4G7)

RNP APCH.		MISSED APPROACH: Climbing right turn to 4000 direct TEDDS and hold.	
<p>Procedure NA at night.                  Procedure NA helicopter visibility reduction below 1 SM NA.</p>			
CKB ASOS-3 <b>127,825</b>	CLARKSBURG APP CON* <b>121.15 284.65</b>	CLNC DEL <b>118.35</b>	UNICOM <b>122.8 (CTAF)</b>



ELEV 1032	TDZE 1032
<p>4000 TEDDS Visual Segment - Obstacles.</p>	
<p>RUBIC</p>	
<p>NOPPO</p>	
<p>BICKE</p>	
<p>RWY 23</p>	
<p>3900</p>	
<p>3000</p>	
<p>2700</p>	
<p>5.1 NM 1.9 NM 4.2 NM</p>	
CATEGORY	A B C D
LNAV MDA	1840-1 1840-1¼ 1840-2½ NA
	808 (900-1) 808 (900-1¼) 808 (900-2½)
CIRCLING	1840-1 1840-1¼ 2020-3 NA
	808 (900-1) 808 (900-1¼) 988 (1000-3)

NE-4, 28 NOV 2024 to 26 DEC 2024

NE-4, 28 NOV 2024 to 26 DEC 2024