

VORTAC MAF <b>114.8</b> Chan <b>95</b>	APP CRS <b>061°</b>	Rwy Idg TDZE Apt Elev <b>2803</b>	<b>N/A</b> <b>N/A</b>
--	------------------------	---	--------------------------

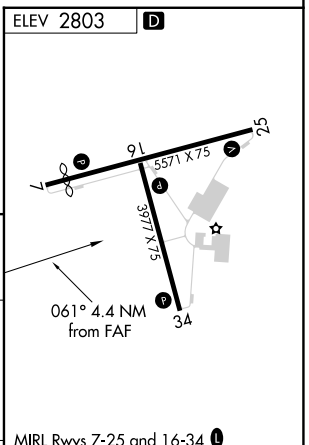
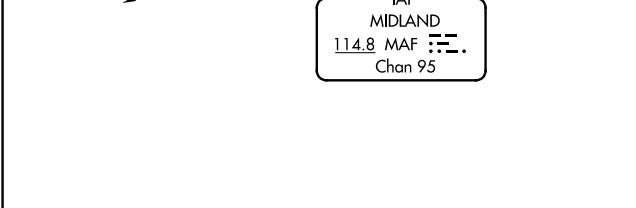
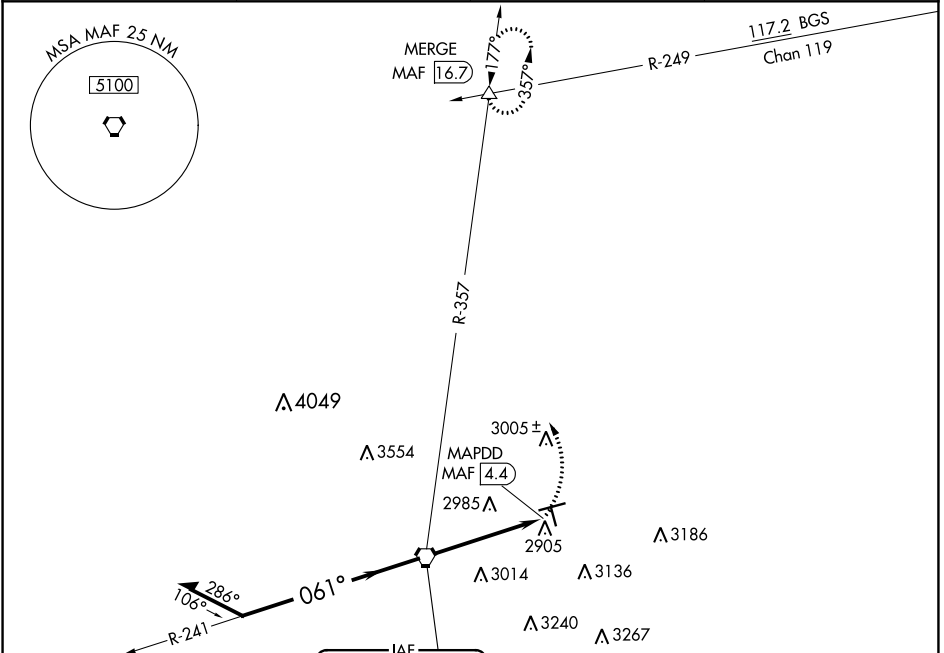
# VOR-A

MIDLAND AIRPARK (MIDD)

**▼** When local altimeter setting not received, use Midland Intl Air and Space Port altimeter setting and increase all MDAs 40 feet and Cat C visibility ¼ SM.

**▲ NA** MISSED APPROACH: Climbing left turn to 4500 via MAF R-357 to MERGE Int and hold.

AWOS-3 <b>118.125</b>	MIDLAND APP CON * <b>124.6 290.4</b>	CLNC DEL <b>121.8</b>	UNICOM <b>122.7 (CTAF) 0</b>
--------------------------	---	--------------------------	---------------------------------



CATEGORY	A	B	C	D	FAF to MAP 4.4 NM					
CIRCLING	3380-1	577 (600-1)	3440-1¾ 635 (700-1¾)	3700-3 897 (900-3)	Knots	60	90	120	150	180
					Min:Sec	4:24	2:56	2:12	1:46	1:28

MIDLAND, TEXAS	MIDLAND AIRPARK (MIDD)
Amdt 2B 09SEP21	VOR-A
32°02'N-102°06'W	

SC-3, 28 NOV 2024 to 26 DEC 2024

SC-3, 28 NOV 2024 to 26 DEC 2024