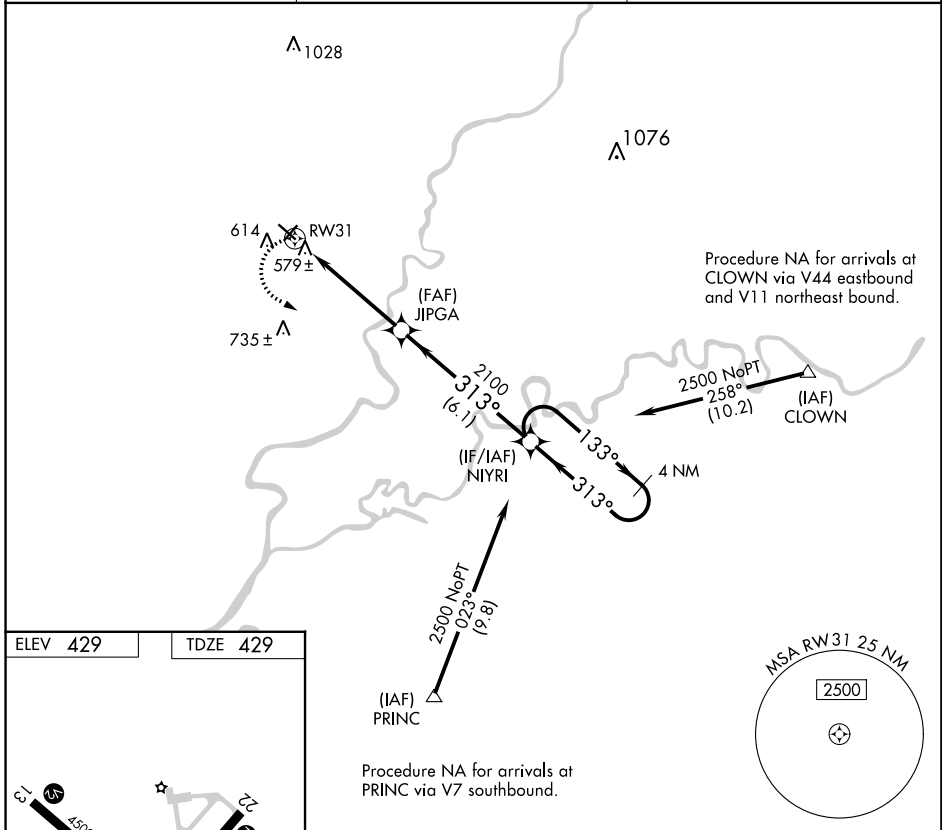


APP CRS	Rwy Idg	<b>4500</b>
<b>313°</b>	TDZE	<b>429</b>
	Apt Elev	<b>429</b>

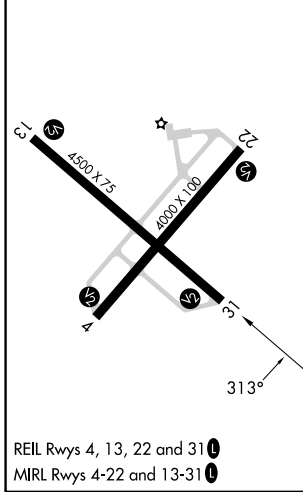
# RNAV (GPS) RWY 31

MOUNT CARMEL MUNI (AJG)

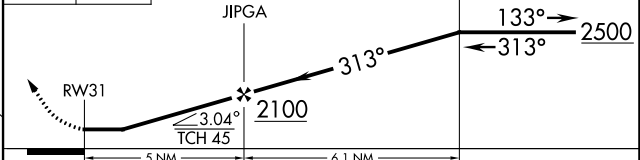
RNP APCH.		MISSED APPROACH: Climbing left turn to 2500 direct NIYRI and hold.
<p>▼ When local altimeter setting not received, use Lawrenceville altimeter setting and increase all MDA 40 feet and increase LNAV Cat D visibility ½ mile.</p> <p>▲ NA</p>		
AWOS-3 <b>134.9</b>	EVANSVILLE APP CON★ <b>125.6 343.7</b>	UNICOM <b>122.7 (CTAF) 0</b>



ELEV 429	TDZE 429
----------	----------



2500	NIYRI	VGSI and descent angles not coincident (VGSI Angle 3.00/TCH 25).	4 NM	NIYRI	Holding Pattern
------	-------	--	------	-------	-----------------



CATEGORY	A	B	C	D
LNAV MDA	840-1	411 (500-1)	840-1¼	411 (500-1¼)

EC-3, 28 NOV 2024 to 26 DEC 2024

EC-3, 28 NOV 2024 to 26 DEC 2024