

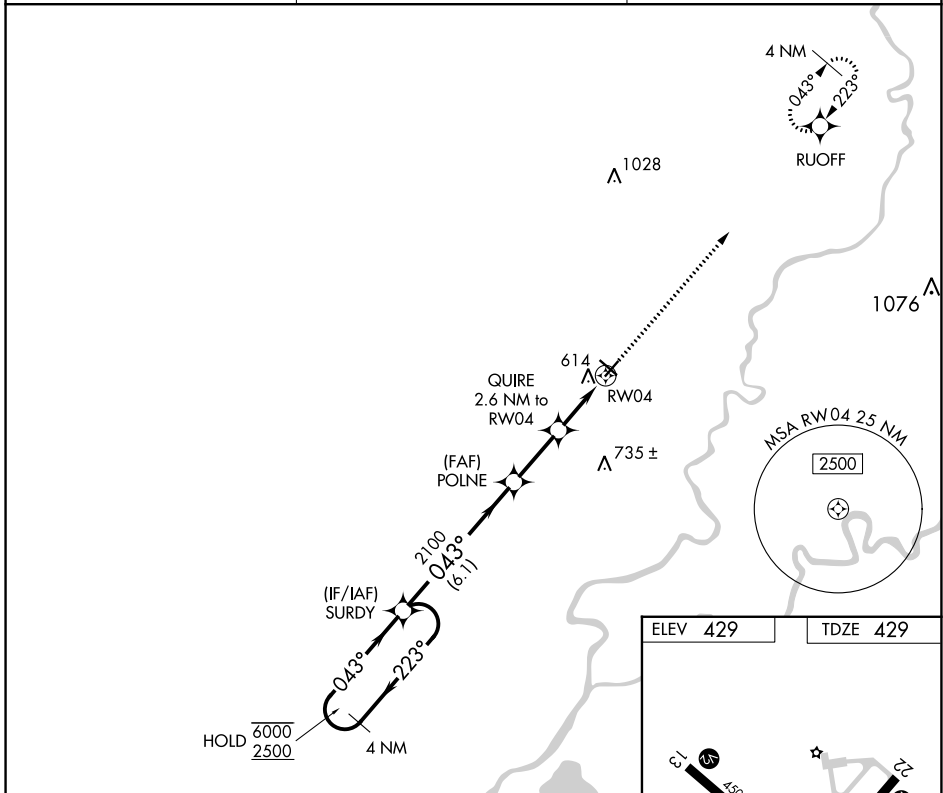
APP CRS	Rwy Idg	4000
043°	TDZE	429
	Apt Elev	429

RNAV (GPS) RWY 4

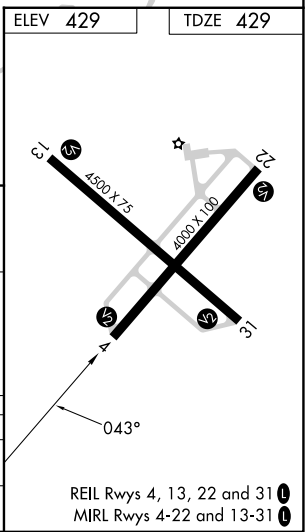
MOUNT CARMEL MUNI (AJG)

RNP APCH.	MISSED APPROACH: Climb to 2500 direct RUOFF and hold.
▼ Rwy 4 helicopter visibility reduction below $\frac{3}{4}$ SM NA. For uncompensated Baro-VNAV systems, LNAV/VNAV NA below -15°C or above 54°C.	

AWOS-3 134.9	EVANSVILLE APP CON* 125.6 343.7	UNICOM 122.7 (CTAF) 0
------------------------	---	--



4 NM Holding Pattern	SURDY	VGSi and RNAV glidepath not coincident (VGSi Angle 3.00/TCH 23).		2500 RUOFF
6000 ← 223°	2500 → 043°	POLNE	QUIRE 2.6 NM to RW04	*LNAV only
GP 3.00°	TCH 40	2100	*1300	*1.5 NM to RW04
← 6.1 NM →		← 2.5 NM →	← 1.1 NM →	← 1.5 NM →
CATEGORY	A	B	C	D
LNAV/VNAV	DA	937-1 $\frac{3}{4}$ 508 (600-1 $\frac{3}{4}$)		NA
LNAV MDA	920-1	491 (500-1)	920-1 $\frac{1}{4}$ 491 (500-1 $\frac{1}{4}$)	NA



EC-3, 28 NOV 2024 to 26 DEC 2024

EC-3, 28 NOV 2024 to 26 DEC 2024

REIL Rwy 4, 13, 22 and 31 **0**
MIRL Rwy 4-22 and 13-31 **0**