

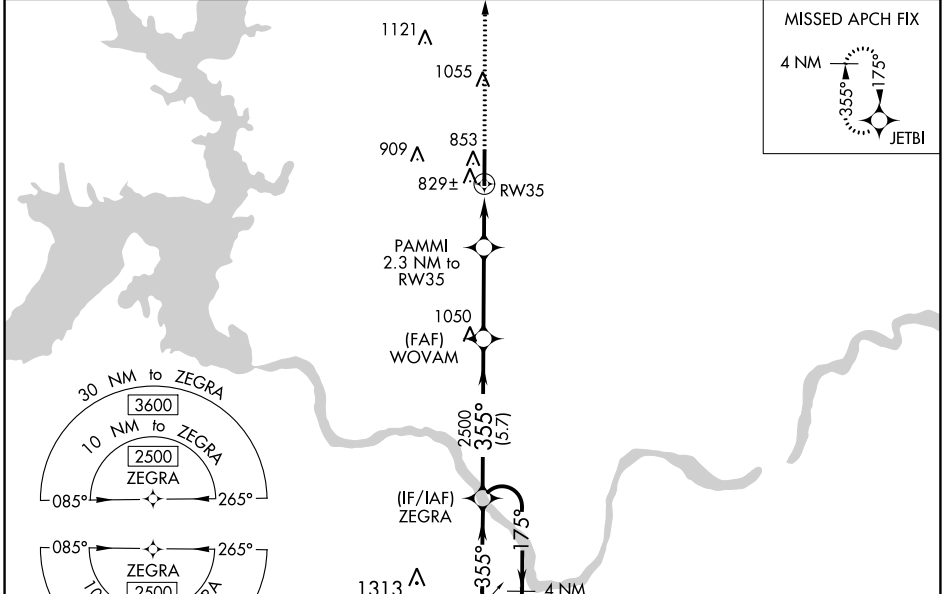
WAAS CH 48918 W35A	APP CRS 355°	Rwy Idg TDZE Apt Elev	6800 694 699
--	------------------------	-----------------------------	---

RNAV (GPS) RWY 35

DURANT RGNL/EAKER FLD (DUA)

RNP APCH.	MISSED APPROACH: Climb to 2500 direct JETBI and hold.
<p>▼</p> <p>▲ For uncompensated Baro-VNAV systems, LNAV/VNAV NA below -16°C or above 54°C.</p>	

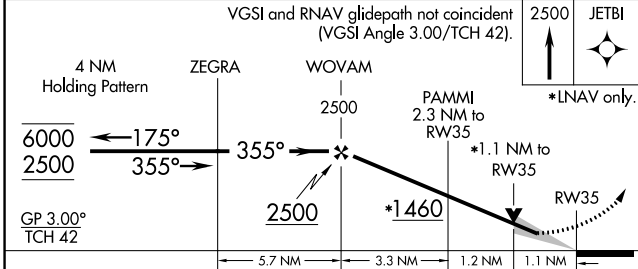
AWOS-3 124.175	FORT WORTH CENTER 124.75 323.0	UNICOM 123.05 (CTAF) 0
--------------------------	--	----------------------------------



SC-1, 28 NOV 2024 to 26 DEC 2024

SC-1, 28 NOV 2024 to 26 DEC 2024

ELEV 699	TDZE 694
----------	----------



CATEGORY	A	B	C	D
LPV DA	894-¾	200 (200-¾)		NA
LNAV/VNAV DA	1086-1½	392 (400-1½)		NA
LNAV MDA	1080-1	386 (400-1)	1080-1½ 386 (400-1½)	NA

