

VORTAC EHF <b>115.4</b> Chan <b>101</b>	APP CRS <b>322°</b>	Rwy ldg TDZE <b>315</b> Apt Elev <b>316</b>
---	------------------------	---

# VOR RWY 33

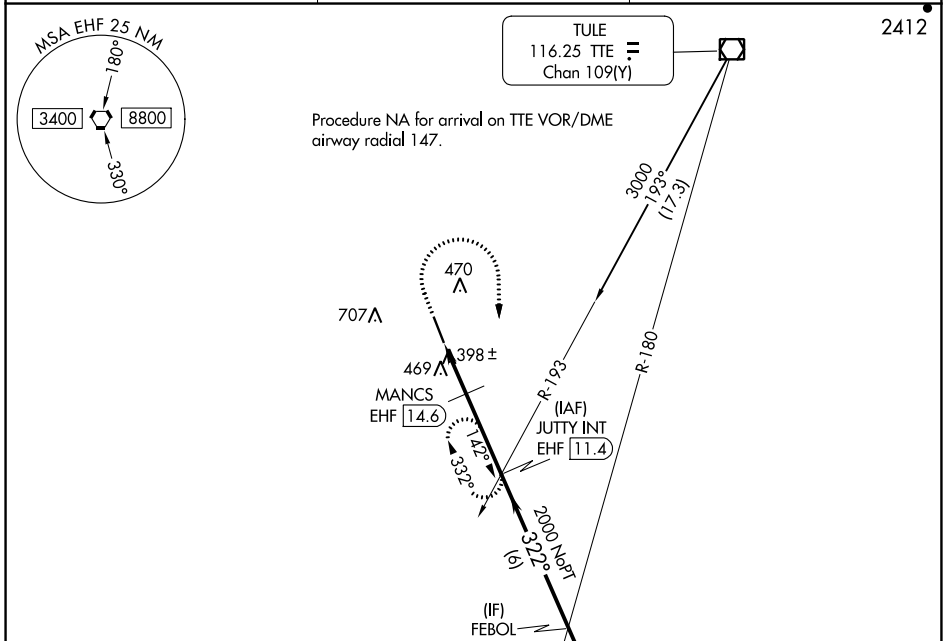
DELANO MUNI (DLO)

DME required.

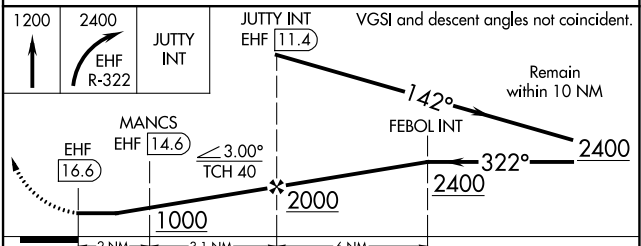
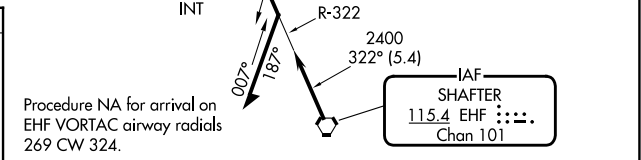
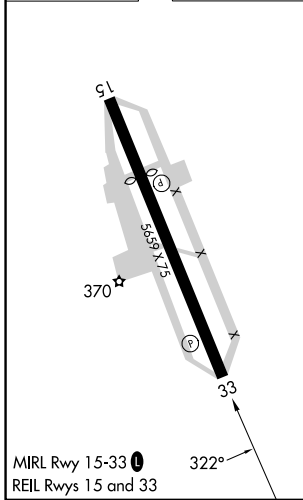
⚠ Circling NA southwest of Rwy 15-33.  
⚠ When local altimeter setting not received, procedure NA.

MISSED APPROACH: Climb to 1200 then climbing right turn to 2400 on EHF VORTAC R-322 to JUTTY INT/EHF 11.4 DME and hold. Continue climb-in-hold to 2400.

AWOS-3P <b>119.55</b>	BAKERSFIELD APP CON* <b>118.9</b>	UNICOM <b>122.8</b> (CTAF) <b>0</b>
--------------------------	--------------------------------------	--



ELEV 316	TDZE 315
----------	----------



CATEGORY	A	B	C	D
S-33	860-1	545 (600-1)	860-1½	545 (600-1½)
CIRCLING	860-1	544 (600-1)	860-1½ 544 (600-1½)	960-2 644 (700-2)

SW-3, 28 NOV 2024 to 26 DEC 2024

SW-3, 28 NOV 2024 to 26 DEC 2024