

PUNTA GORDA, FLORIDA

AL-6178 (FAA)

24249

LOC/DME I-PGD <b>109.75</b> Chan <b>34 (Y)</b>	APP CRS <b>035°</b>	Rwy Idg TDZE Apt Elev	<b>7193</b> <b>24</b> <b>26</b>
--	------------------------	-----------------------------	---------------------------------------

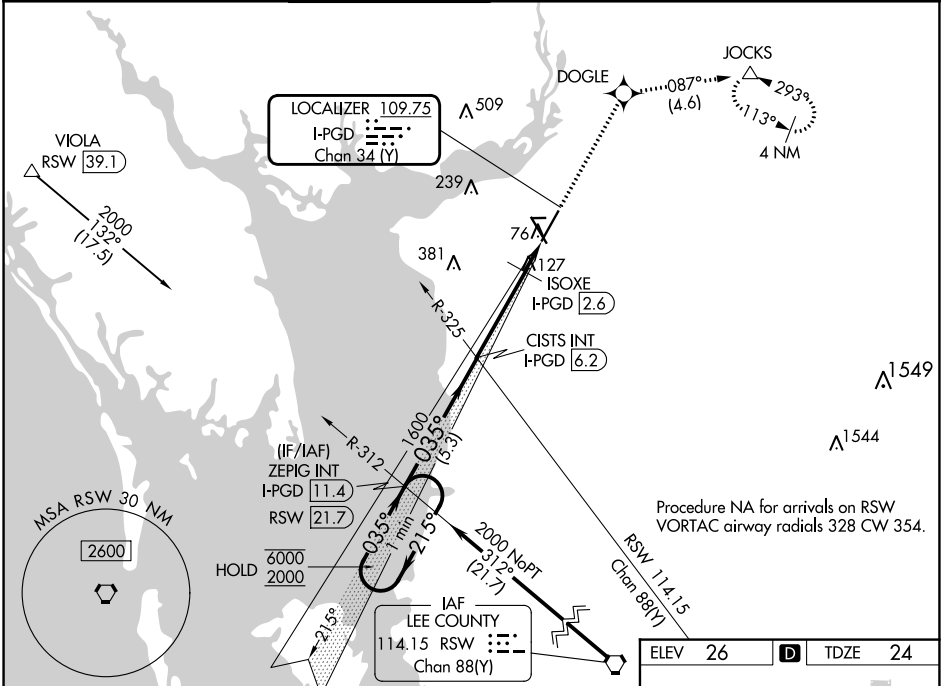
# ILS or LOC RWY 4

PUNTA GORDA (PGD)

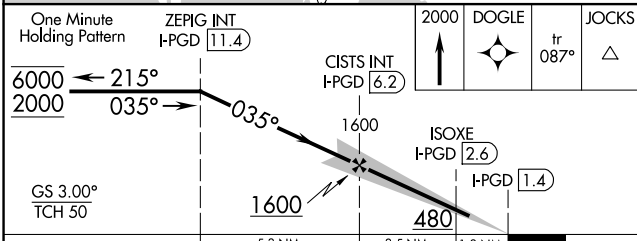
RNP APCH - GPS.

MISSED APPROACH: Climb to 2000 direct DOGLE and on track 087° to JOCKS and hold.

ATIS ★ <b>135.675</b>	FORT MYERS APP CON ★ <b>127.05 306.2</b>	PUNTA GORDA TOWER ★ <b>121.0 (CTAF) 0</b>	GND CON <b>119.55</b>	CLNC DEL <b>119.55</b>	CLNC DEL <b>127.05</b> (When twr closed)	UNICOM <b>122.975</b>
--------------------------	---	--	--------------------------	---------------------------	--	--------------------------

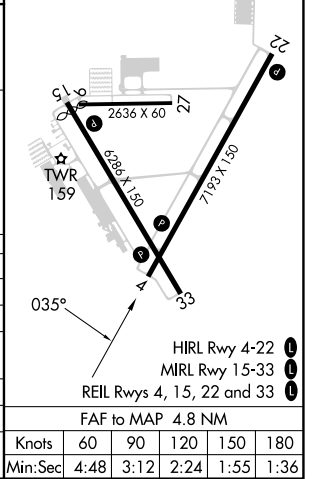


Procedure NA for arrivals on RSW  
VORTAC airway radials 328 CW 354.



ELEV 26	TDZE 24
---------	---------

CATEGORY	A	B	C	D
S-ILS 4		256-3/4	232 (300-3/4)	
S-LOC 4	480-1	456 (500-1)	480-1 3/8	456 (500-1 3/8)
CIRCLING	480-1	580-1	600-1 1/2	740-2 1/4
	454 (500-1)	554 (600-1)	574 (600-1 1/2)	714 (800-2 1/4)
ISOXE FIX MINIMUMS (DME REQUIRED)				
S-LOC 4	380-1	356 (400-1)		
CIRCLING	460-1	580-1	600-1 1/2	740-2 1/4
	434 (500-1)	554 (600-1)	574 (600-1 1/2)	714 (800-2 1/4)



PUNTA GORDA, FLORIDA  
Amdt 1 05SEP24

26°55'N-81°59'W

# PUNTA GORDA (PGD) ILS or LOC RWY 4

SE-3, 28 NOV 2024 to 26 DEC 2024

SE-3, 28 NOV 2024 to 26 DEC 2024