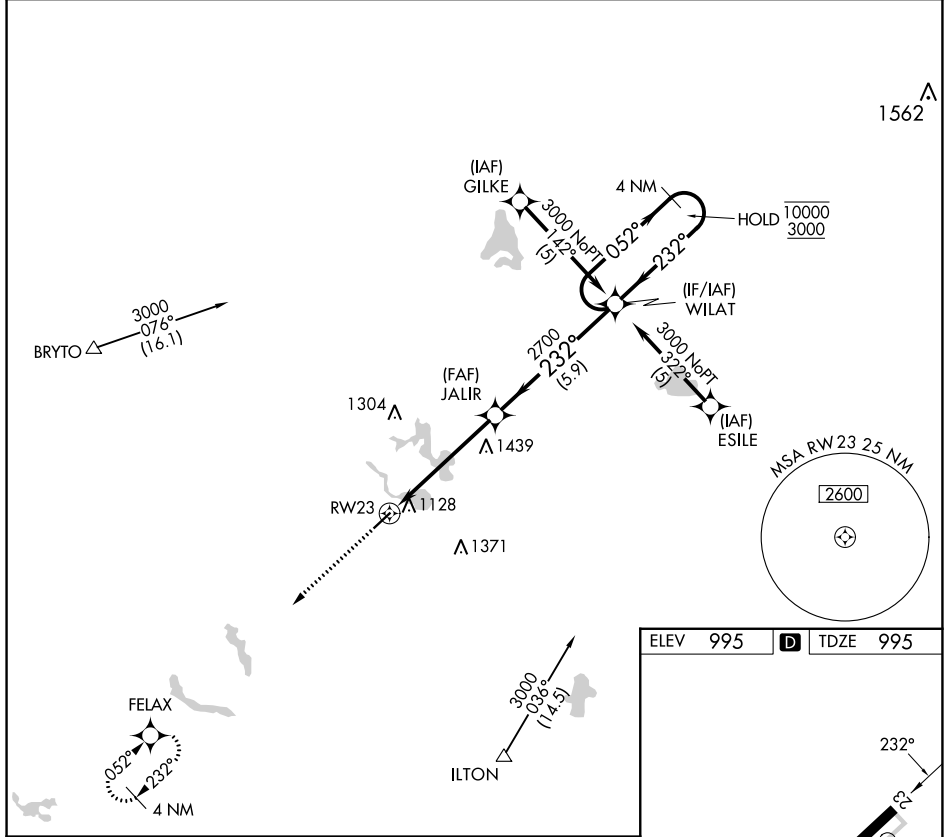


APP CRS	Rwy Idg	4000
232°	TDZE	995
	Apt Elev	995

RNAV (GPS) RWY 23

TRI-STATE STEUBEN COUNTY (A.N.Q.)

RNP APCH.		MISSED APPROACH: Climb to 3000 direct FELAX and hold.
Rwy 23 helicopter visibility reduction below 1 SM NA. Procedure NA at night.		
AWOS-3 118.175	FORT WAYNE APP CON 127.2 284.6 (SW/NW) 132.15 284.6 (SE/NE)	UNICOM 123.075 (CTAF)



EC-2, 28 NOV 2024 to 26 DEC 2024

EC-2, 28 NOV 2024 to 26 DEC 2024

ELEV	995		TDZE	995
------	-----	--	------	-----

3000	FELAX	Visual Segment - Obstacles.	4 NM
			Holding Pattern
RWY 23		JALIR	WILAT
5.2 NM		5.9 NM	4 NM
2700		232°	052°
		232°	10000
			3000
CATEGORY	A	B	C
LN AV MDA	1700-1	705 (800-1)	1700-2
			705 (800-2)
			NA