

| | | |
|--|------------------------|---|
| WAAS CH 58133 W17A | APP CRS 177° | Rwy Idg 4020 TDZE 1176 Apt Elev 1176 |
|--|------------------------|---|

RNAV (GPS) RWY 17

HAMPTON MUNI (HPT)

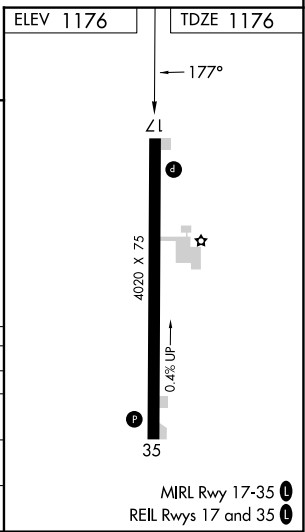
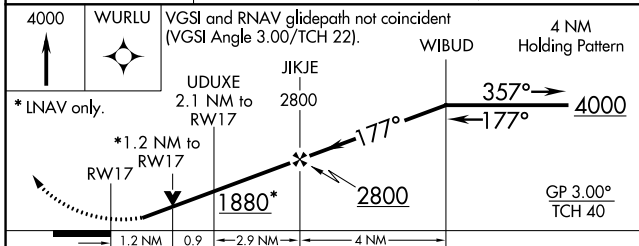
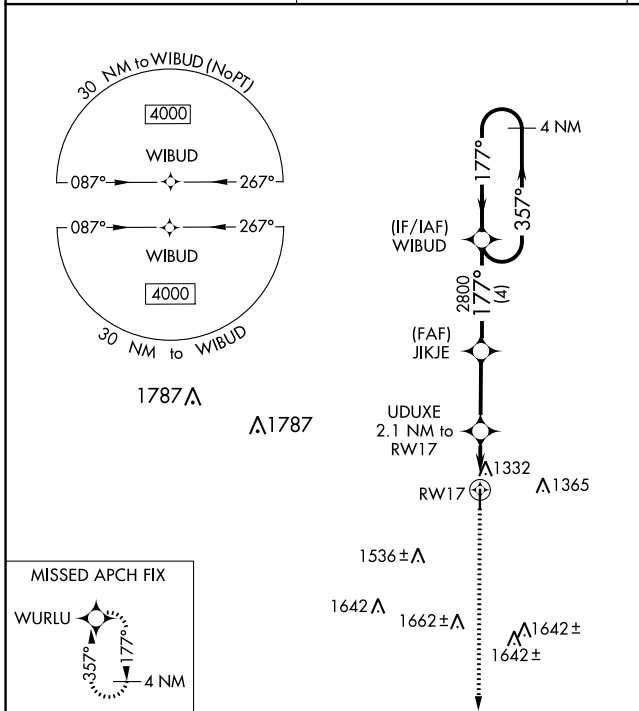
▽ VDP and Baro-VNAV NA when using Mason City altimeter setting. For uncompensated Baro-VNAV systems, LNAV/VNAV NA below -17°C (2°F) or above 54°C (130°F).
△ NA DME/DME RNP: 0.3 NA. Helicopter visibility reduction below ¼ SM NA. When local altimeter setting not received, use Mason City altimeter setting and increase all DA 67 feet and all MDA 80 feet, and LNAV/VNAV all Cats visibility ¼ mile.

MISSED APPROACH:
Climb to 4000 direct WURLU and hold, continue climb-in-hold to 4000.

AWOS-3
121.025

MINNEAPOLIS CENTER
134.0 288.3

UNICOM
122.7 (CTAF) 0



| CATEGORY | A | B | C | D |
|-------------------|---------|--------------|---|----|
| LPV DA | 1426-1 | 250 (300-1) | | NA |
| LNAV/VNAV DA | 1605-1½ | 429 (500-1½) | | NA |
| LNAV MDA | 1600-1 | 424 (500-1) | | NA |
| C CIRCLING | 1640-1 | 464 (500-1) | | NA |

NC-3, 28 NOV 2024 to 26 DEC 2024

NC-3, 28 NOV 2024 to 26 DEC 2024