

(CHATT6.CHATT) 24305

AL-6201 (FAA)

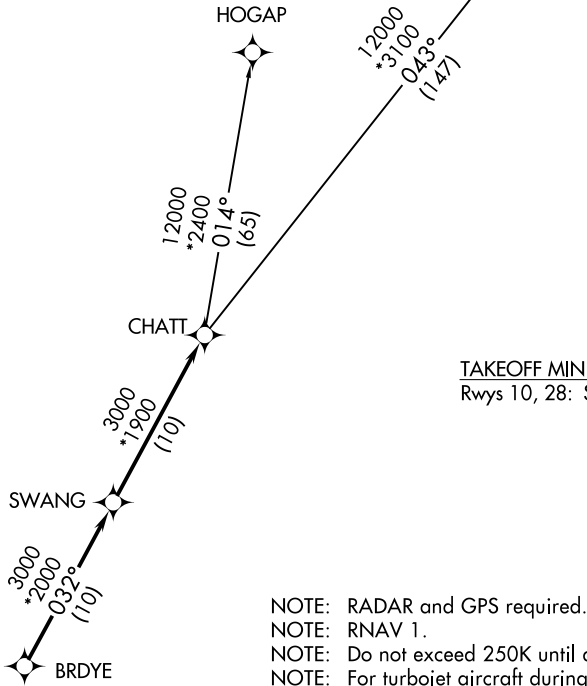
THOMSON/McDUFFIE COUNTY (HQU)  
THOMSON, GEORGIA

# CHATT SIX DEPARTURE (RNAV)

AUGUSTA DEP CON ★  
124.45 270.3  
CTAF  
122.8  
AWOS-3  
120.625

GREENSBORO  
GSO

**TOP ALTITUDE:  
ASSIGNED BY ATC**



TAKEOFF MINIMUMS:  
Rwys 10, 28: Standard.

- NOTE: RADAR and GPS required.
- NOTE: RNAV 1.
- NOTE: Do not exceed 250K until advised by ATC.
- NOTE: For turbojet aircraft during Masters golf tournament week.

NOTE: Chart not to scale.



## DEPARTURE ROUTE DESCRIPTION

TAKEOFF RUNWAY 10, 28: Climb on assigned heading for RADAR vectors to BRDYE, then on depicted route to CHATT, thence. . . .

. . . .maintain altitude assigned by ATC. Expect clearance to filed altitude/flight level within 10 minutes after departure.

GREENSBORO TRANSITION (CHATT6.GSO)  
HOGAP TRANSITION (CHATT6.HOGAP)

CHATT SIX DEPARTURE (RNAV)  
(CHATT6.CHATT) 29MAR18

THOMSON, GEORGIA  
THOMSON/McDUFFIE COUNTY (HQU)

SE-4, 28 NOV 2024 to 26 DEC 2024

SE-4, 28 NOV 2024 to 26 DEC 2024