

WAAS CH 86608	APP CRS 345°	Rwy Idg TDZE 610	5002
W35A		Apt Elev 610	

RNAV (GPS) RWY 35

ROBERT SIBLEY (SZY)

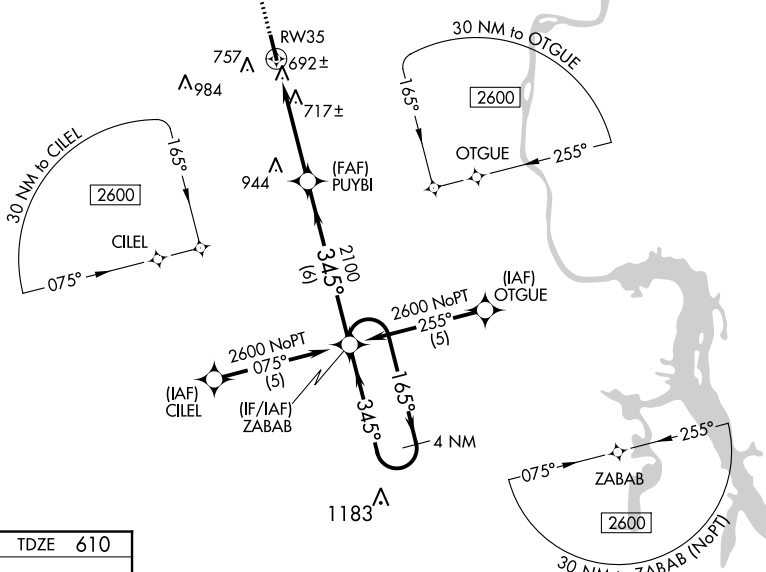
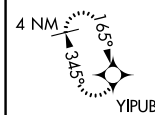
RNP-APCH - GPS.

Baro-VNAV NA when using Mc Kellar-Sipes Rgnl altimeter setting. For uncompensated Baro-VNAV systems, LNAV/VNAV NA below -16°C or above 47°C. Helicopter visibility reduction below 1 SM not authorized. When local altimeter setting not received, use Mc Kellar-Sipes Rgnl altimeter setting: increase LPV DA to 1042 and all visibilities ¼ SM, increase LNAV/VNAV DA to 1084 and all visibilities ½ SM; increase all MDAs 100 feet and LNAV visibility Cat C and D and Circling visibility Cat D ¼ SM. Straight-in Rwy 35 NA at night, Circling Rwy 17, 35 NA at night.

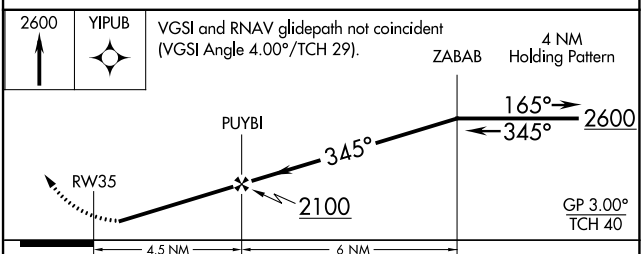
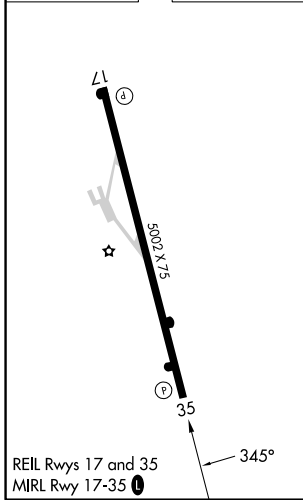
MISSED APPROACH:
Climb to 2600 direct YIPUB and hold.

AWOS-3 118.425	MEMPHIS CENTER 124.35 318.1	UNICOM 122.7 (CTAF) 0
--------------------------	---------------------------------------	---------------------------------

MISSED APCH FIX



ELEV 610	TDZE 610
-----------------	-----------------



CATEGORY	A	B	C	D
LPV DA	944-1¼ 334 (400-1¼)			
LNAV/VNAV DA	986-1¼ 376 (400-1¼)			
LNAV MDA	980-1 370 (400-1)			980-1¼ 370 (400-1¼)
CIRCLING	1060-1 450 (500-1)	1080-1 470 (500-1)	1080-1½ 470 (500-1½)	1300-2¼ 690 (700-2¼)

SE-1, 28 NOV 2024 to 26 DEC 2024

SE-1, 28 NOV 2024 to 26 DEC 2024