

WAAS CH 78432 W01B	APP CRS 006°	Rwy Idg TDZE 522 Apt Elev 522	5002
--	------------------------	---	-------------

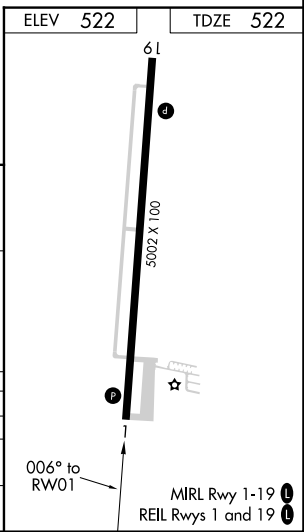
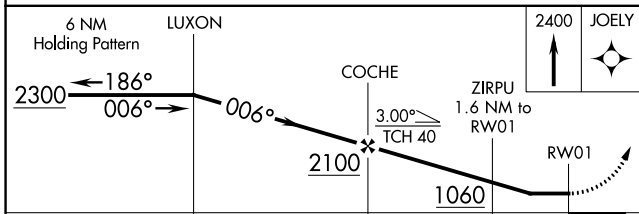
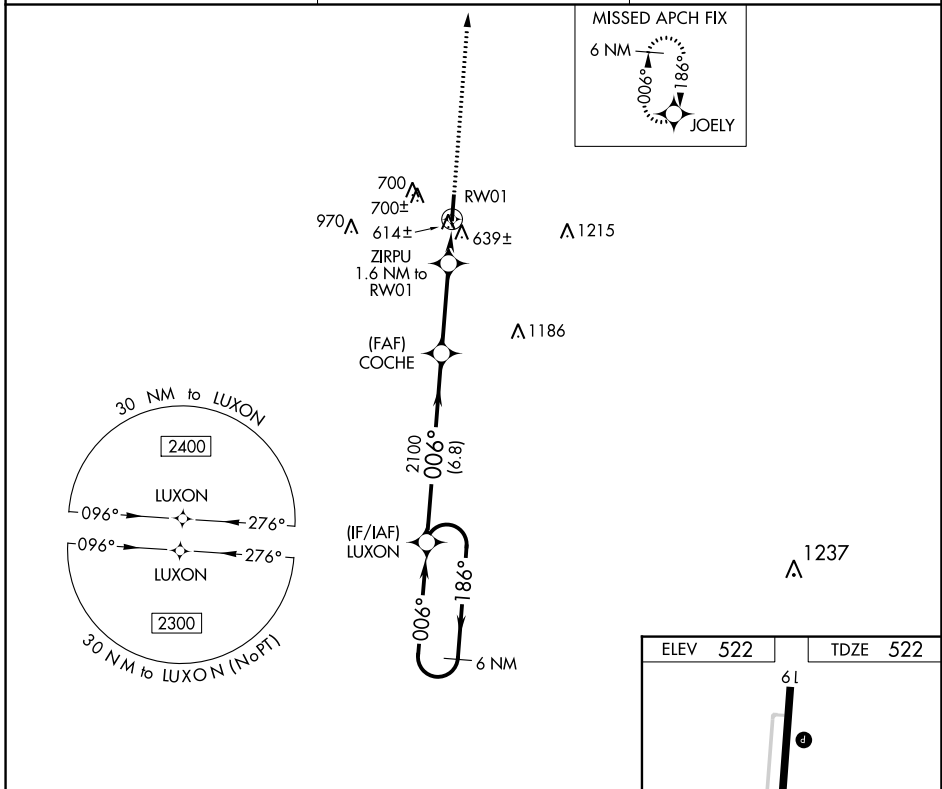
RNAV (GPS) Y RWY 1

MAYFIELD GRAVES COUNTY (M25)

⚠ DME/DME RNP-0.3 NA. When local altimeter setting not received, use Paducah altimeter setting and increase all MDA 80 feet and increase LP Cat C and D visibility $\frac{3}{8}$ mile and LNAV Cat C and D visibility and Circling Cat C and D visibility $\frac{1}{4}$ mile. Rwy 1, 19 helicopter visibility reduction below 1 SM NA. Procedure NA at night.

⚠ MISSED APPROACH: Climb to 2400 direct JOELY and hold.

AWOS-3 120.625	MEMPHIS CENTER 133.65 292.15	UNICOM 122.8 (CTAF) ①
--------------------------	--	---------------------------------



CATEGORY	A	B	C	D
LP MDA	880-1 358 (400-1)			
LNAV MDA	900-1 378 (400-1)		900-1 $\frac{1}{8}$ 378 (400-1 $\frac{1}{8}$)	
C CIRCLING	1060-1 538 (600-1)		1060-1 $\frac{1}{2}$ 538 (600-1 $\frac{1}{2}$) 1280-2 $\frac{1}{2}$ 758 (800-2 $\frac{1}{2}$)	

SE-1, 28 NOV 2024 to 26 DEC 2024

SE-1, 28 NOV 2024 to 26 DEC 2024