

VOR/DME CNG 113.1 Chan 78	APP CRS 137°	Rwy Idg TDZE Apt Elev	N/A N/A 522
---	------------------------	-----------------------------	--

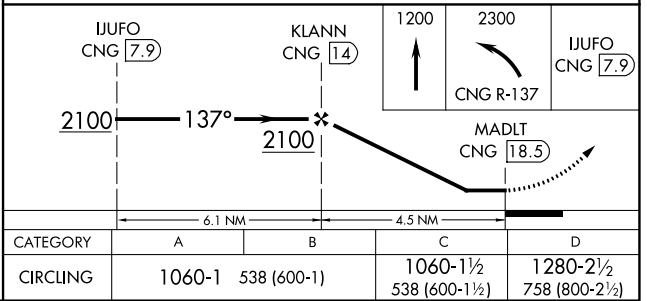
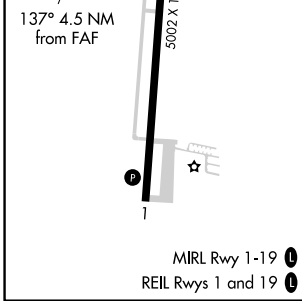
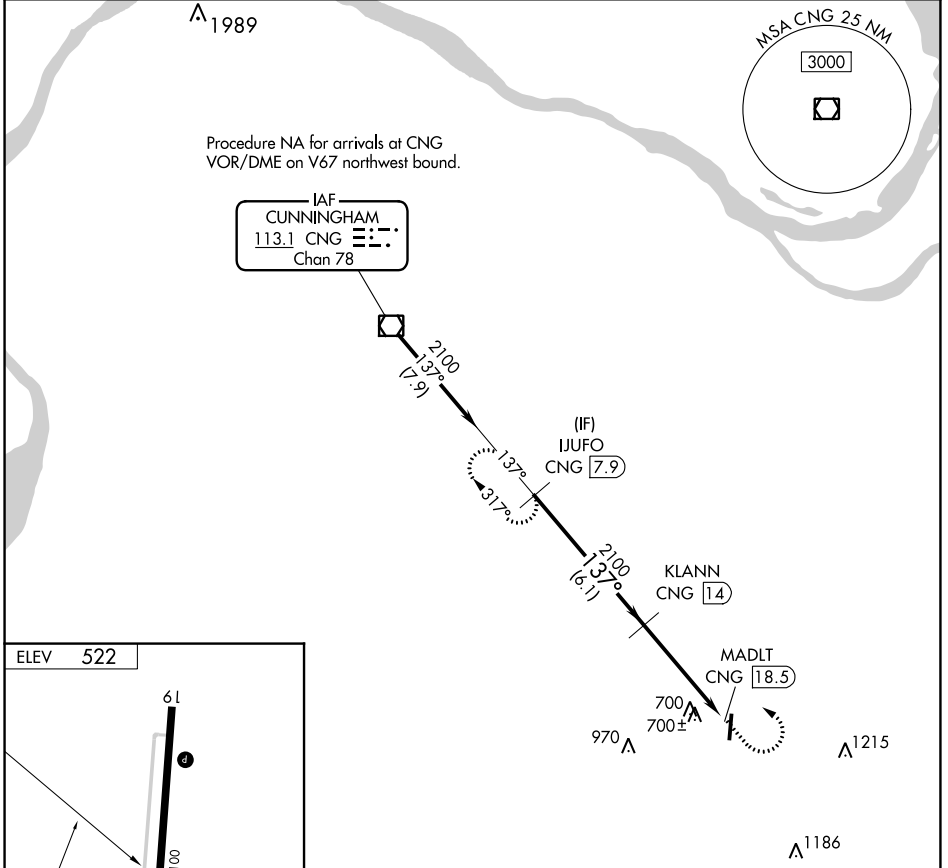
VOR/DME-A

MAYFIELD GRAVES COUNTY (M25)

NA Circling Rwy 1 NA at night. When local altimeter setting not received, use Paducah altimeter setting: increase all MDAs 80 feet and visibility Cats C and D ¼ SM.

MISSED APPROACH: Climb to 1200 then climbing left turn to 2300 on CNG VOR/DME R-137 to IJUFO 7.9 DME and hold.

AWOS-3 120.625	MEMPHIS CENTER 133.65 292.15	UNICOM 122.8 (CTAF)
--------------------------	--	-------------------------------



SE-1, 28 NOV 2024 to 26 DEC 2024

SE-1, 28 NOV 2024 to 26 DEC 2024