

VORTAC BDF 114.7 Chan 94	APP CRS 133°	Rwy Idg 4003 TDZE 564 Apt Elev 585
----------------------------------------------	------------------------	---------------------------------------------------------------

VOR RWY 13

MARSHALL COUNTY (C75)

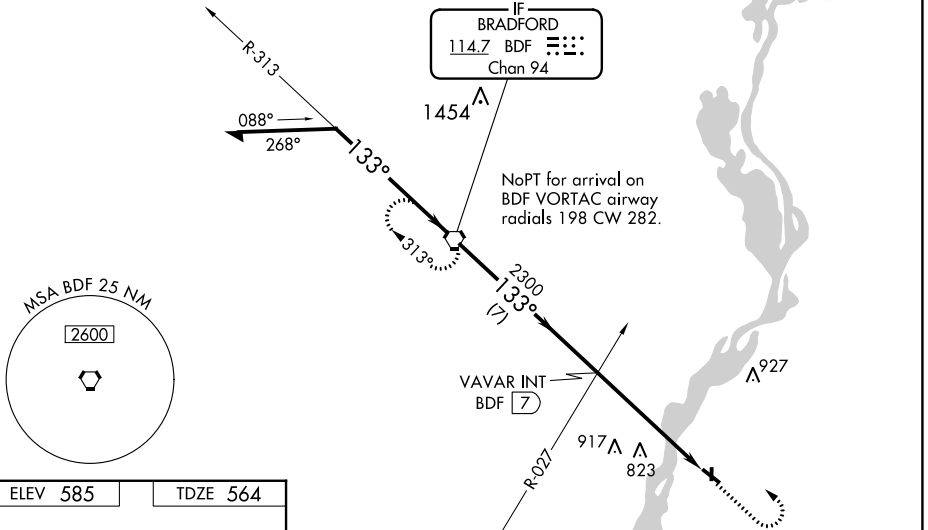
⚠ Circling to Rwy 31, 36 NA at night.
⚠ Rwy 13 helicopter visibility reduction below 3/4 SM NA.

MISSED APPROACH: Climb to 1500, then climbing left turn to 2500 direct BDF VORTAC and hold.

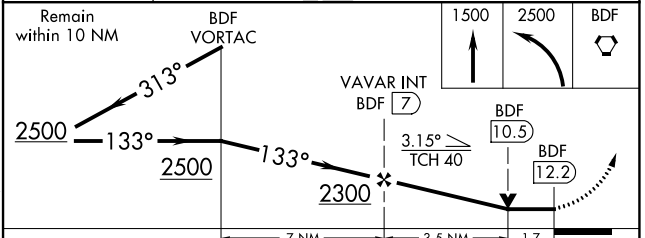
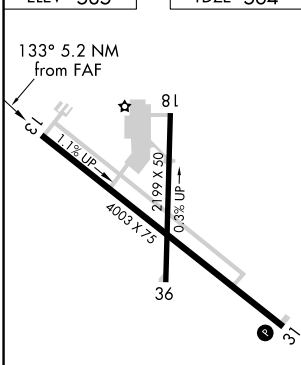
AWOS-3
119.425

CHICAGO CENTER
124.55 307.125

UNICOM
122.8 (CTAF) **📻**



ELEV 585 TDZE 564



CATEGORY	A	B	C	D
S-13	1140-1	576 (600-1)	1140-1 ⁵ / ₈ 576 (600-1 ⁵ / ₈)	NA
CIRCLING	1140-1	555 (600-1)	1200-1 ³ / ₄ 615 (700-1 ³ / ₄)	NA