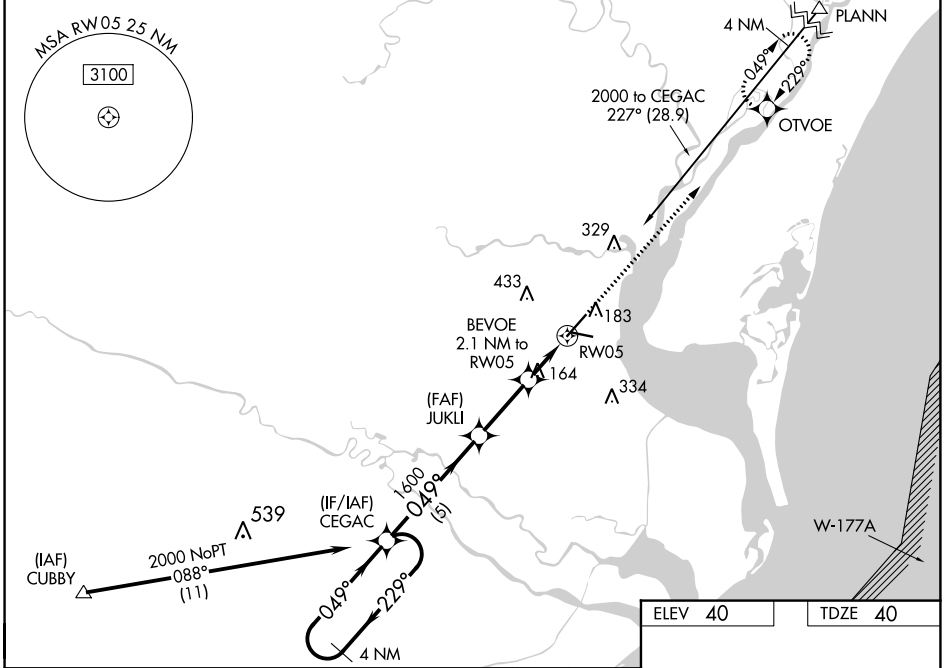


WAAS CH <b>97635</b> <b>W05A</b>	APP CRS <b>049°</b>	Rwy Idg TDZE Apt Elev	<b>6005</b> <b>40</b> <b>40</b>
--	------------------------	-----------------------------	---------------------------------------

**RNAV (GPS) RWY 5**  
GEORGETOWN COUNTY (GGE)

RNP APCH. <p>For uncorrected Baro-VNAV systems, LNAV/VNAV NA below -15°C or above 54°C. Rwy 5 helicopter visibility reduction below 3/4 SM NA. For inop ALS, increase LNAV/VNAV visibility Cats A/B to 3/8 SM. Inop table does not apply to LPV all Cats. Circling Rwy 11, 29 NA at night.</p>		ODALS 	MISSED APPROACH: Climb to 2000 direct OTVOE and hold.
---	--	-----------	--

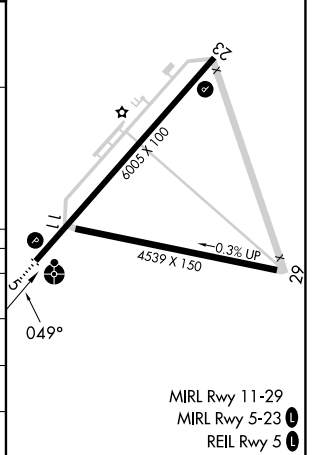
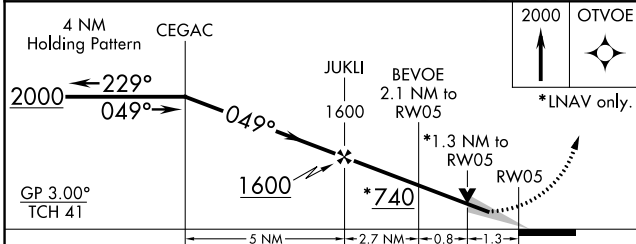
AWOS-3 <b>118.275</b>	MYRTLE BEACH APP CON ★ <b>127.4 257.95</b>	GCO <b>121.725</b>	UNICOM <b>123.0</b> (CTAF)
--------------------------	---	-----------------------	-------------------------------



SE-2, 28 NOV 2024 to 26 DEC 2024

SE-2, 28 NOV 2024 to 26 DEC 2024

ELEV 40	TDZE 40
---------	---------



CATEGORY	A	B	C	D
LPV DA		290-3/4	250 (300-3/4)	
LNAV/VNAV DA		304-3/4	264 (300-3/4)	
LNAV MDA	480-3/4	440 (500-3/4)	480-1/8	440 (500-1/8)
CIRCLING	500-1	520-1	740-2	740-2 1/4
	460 (500-1)	480 (500-1)	700 (700-2)	700 (700-2 1/4)

MIRL Rwy 11-29  
MIRL Rwy 5-23   
REIL Rwy 5