

WAAS CH 77834 W02A	APP CRS 023°	Rwy Idg TDZE Apt Elev	5000 805 812
--	------------------------	-----------------------------	---

RNAV (GPS) RWY 2

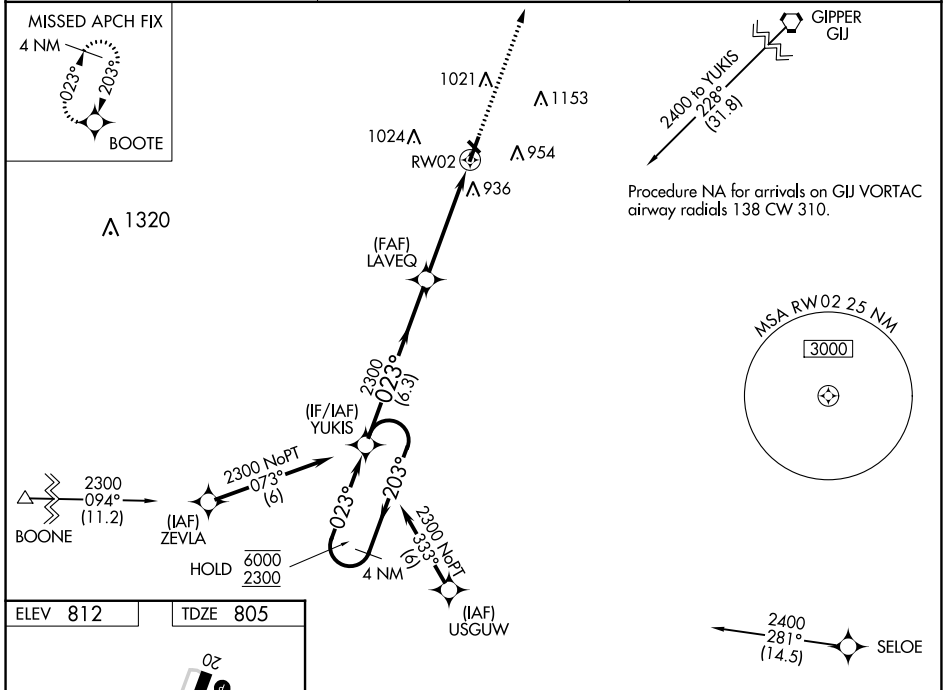
LA PORTE MUNI (PPO)

RNP APCH - GPS.

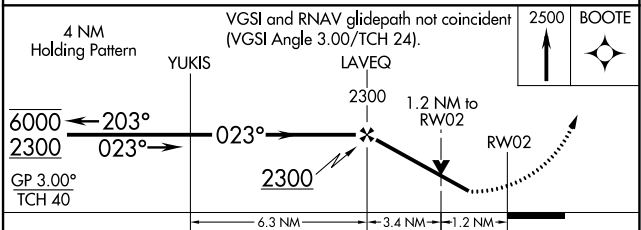
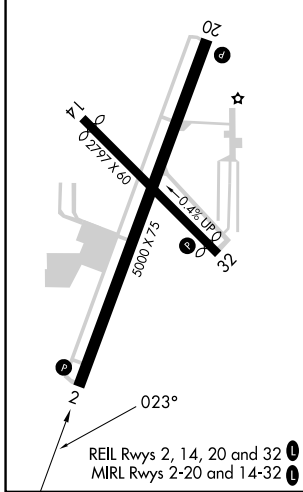
⚠ Circling Rwy 14, 32 NA at night. For uncompensated Baro-VNAV systems, LNAV/VNAV NA below -16°C or above 54°C. Rwy 2 helicopter visibility reduction below ¼ SM NA. Baro-VNAV and VDP NA when using South Bend altimeter setting. When local altimeter setting not received, use South Bend altimeter setting and increase LPV DA to 1151 feet and all visibilities ½ SM. Increase LNAV/VNAV DA to 1271 feet and all visibilities ¼ SM. Increase all MDAs 60 feet and LNAV visibility Cat C/D ¼ SM, and Circling visibility Cat C/D ¼ SM.

MISSED APPROACH: Climb to 2500 direct BOOTE and hold.

AWOS-3PT 119.825	SOUTH BEND APP CON * 132.05 257.8	UNICOM 123.0 (CTAF) 0
----------------------------	---	---------------------------------



ELEV 812	TDZE 805
----------	----------



CATEGORY	A	B	C	D
LPV DA		1098-7/8	293 (300-7/8)	
LNAV/VNAV DA		1220-1 1/8	415 (500-1 1/8)	
LNAV MDA	1220-1	415 (500-1)	1220-1 1/8	415 (500-1 1/8)
<input checked="" type="checkbox"/> CIRCLING	1320-1	508 (600-1)	1560-2 1/4 748 (800-2 1/4)	1560-2 1/2 748 (800-2 1/2)

EC-2, 28 NOV 2024 to 26 DEC 2024

EC-2, 28 NOV 2024 to 26 DEC 2024