

WAAS CH 93825 W03A	APP CRS 027°	Rwy Idg TDZE 36 Apt Elev 36	5500
--	------------------------	---	-------------

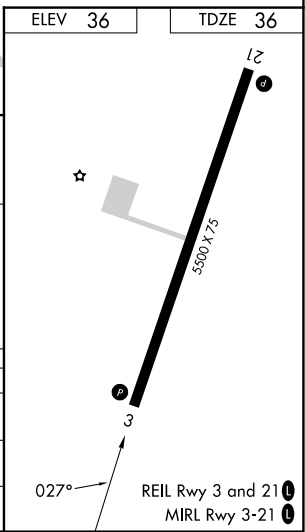
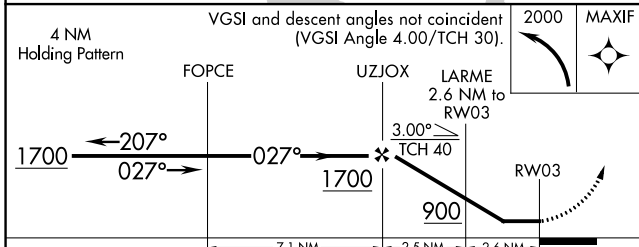
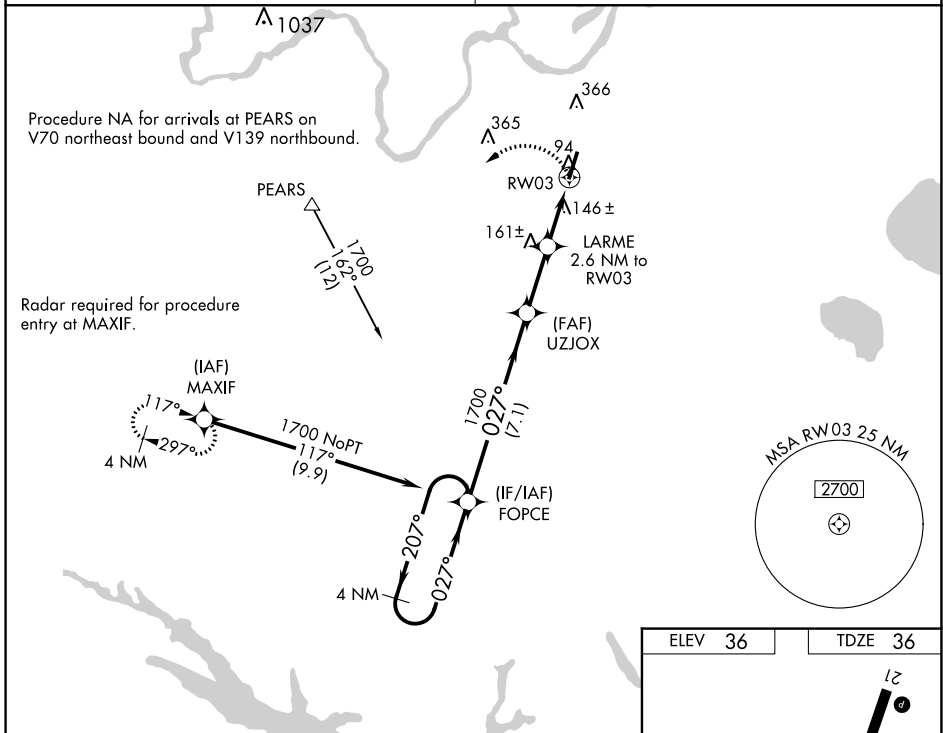
RNAV (GPS) RWY 3

PLYMOUTH MUNI (PMZ)

⚠ Use Northeastern Rgnl altimeter setting; when not received, use Coastal Carolina Rgnl altimeter setting and increase all MDA 80 feet; increase all Cat C visibilities 1/4 SM. When VGSi inop, procedure NA at night. DME/DME RNP-0.3 NA. Visibility reduction by helicopters NA.

MISSED APPROACH: Climbing left turn to 2000 direct MAXIF and hold.

CHERRY POINT APP CON 119.35 377.175	UNICOM 122.8 (CTAF) 📻
---	--



CATEGORY	A	B	C	D
LP MDA	440-1	404 (500-1)	440-1 1/8 404 (500-1 1/8)	NA
LNAV MDA	460-1	424 (500-1)	460-1 1/4 424 (500-1 1/4)	NA
CIRCLING	520-1 484 (500-1)	720-1 684 (700-1)	720-2 684 (700-2)	NA

SE-2, 28 NOV 2024 to 26 DEC 2024

SE-2, 28 NOV 2024 to 26 DEC 2024