

WAAS CH <b>56524</b> <b>W04A</b>	APP CRS <b>040°</b>	Rwy Idg <b>4401</b> TDZE <b>34</b> Apt Elev <b>35</b>
--	------------------------	---

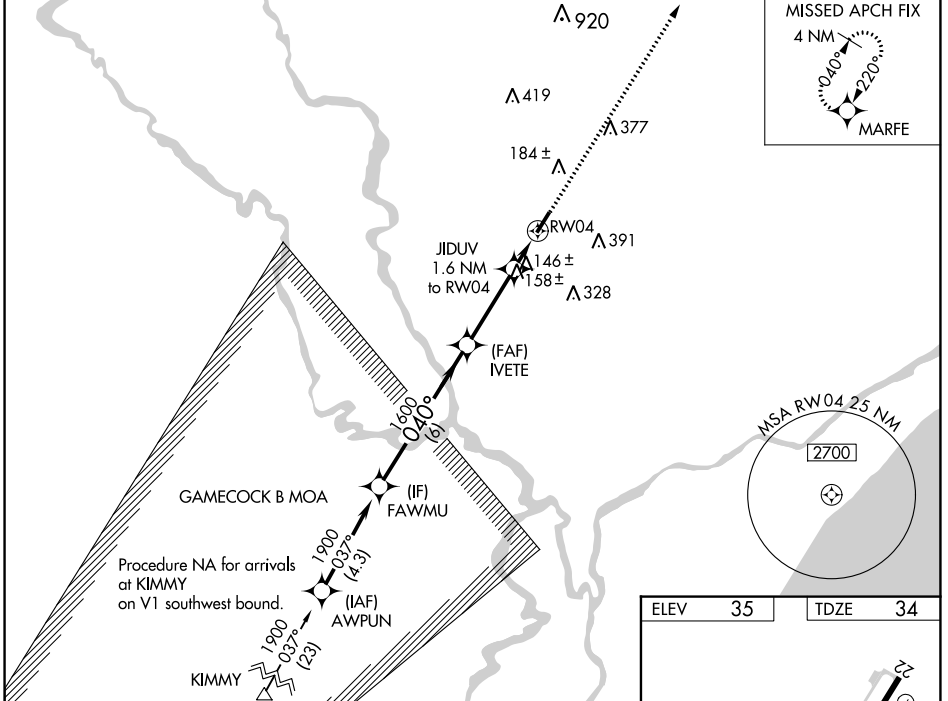
**RNAV (GPS) RWY 4**  
CONWAY-HORRY COUNTY (HYW)

RNP APCH.

**⚠** When Circling to Rwy 22 at night, operational VGSI required, remain on or above VGSI glidepath until threshold. Rwy 4 helicopter visibility reduction below ¾ SM NA. For uncompensated Baro-VNAV systems, LNAV/VNAV NA below -15°C or above 54°C.

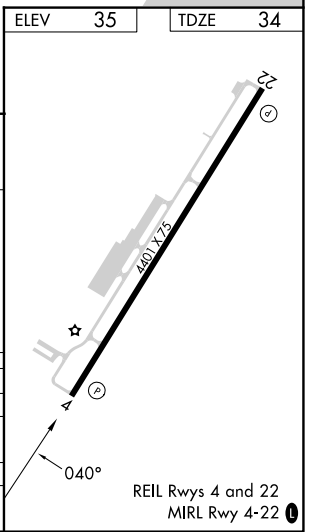
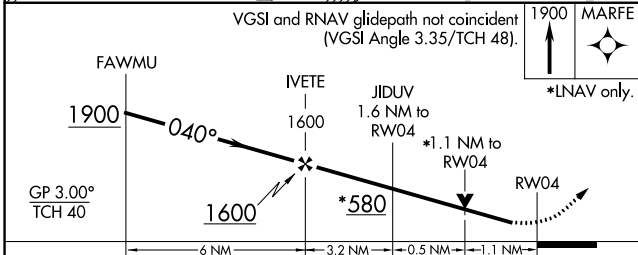
MISSED APPROACH: Climb to 1900 direct MARFE and hold.

AWOS-3 <b>119.525</b>	MYRTLE BEACH APP CON★ <b>127.4 257.95</b>	UNICOM <b>122.7 (CTAF)</b>
--------------------------	--	-------------------------------



SE-2, 28 NOV 2024 to 26 DEC 2024

SE-2, 28 NOV 2024 to 26 DEC 2024



ELEV	35	TDZE	34
CATEGORY	A	B	C
LPV DA	315-7/8 281 (300-7/8)		
LNAV/DA VNAV	525-13/8 491 (500-13/8)		
LNAV MDA	460-1	426 (500-1)	460-1/4 426 (500-1/4)
<b>C</b> CIRCLING	520-1 485 (500-1)	540-1 505 (600-1)	700-1 3/4 665 (700-1 3/4)
			700-2 665 (700-2)