

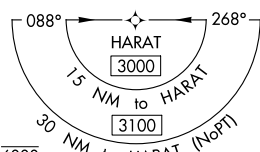
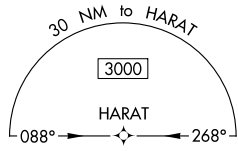
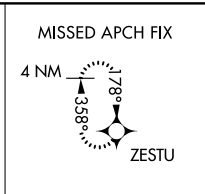
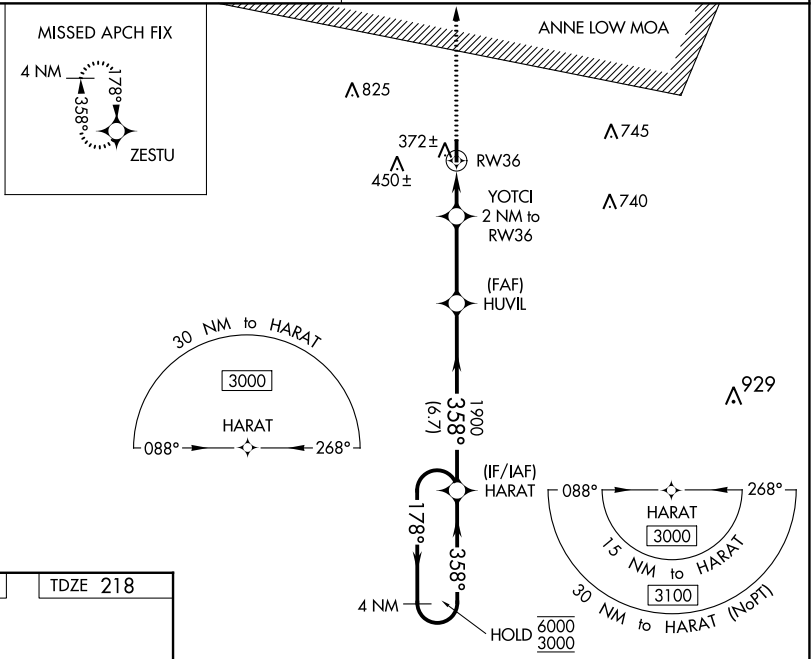
WAAS CH 61024 W36A	APP CRS 358°	Rwy Idg TDZE Apt Elev	4202 218 218
--	------------------------	-----------------------------	---

RNAV (GPS) RWY 36

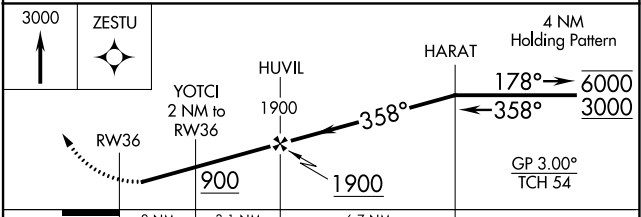
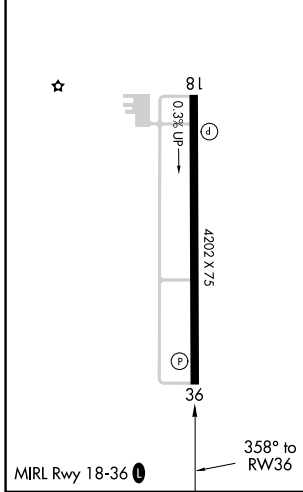
SPRINGHILL (SPH)

RNP APCH.	<p>MISSED APPROACH: Climb to 3000 direct ZESTU and hold.</p>
<p>NA Rwy 36 helicopter visibility reduction below 3/4 SM NA. For uncompensated Baro-VNAV systems, procedure NA below -15°C or above 54°C.</p>	

SHREVEPORT APP CON 123.75 360.725	UNICOM 122.8 (CTAF) 0
---	---------------------------------



ELEV 218	TDZE 218
----------	----------



CATEGORY	A	B	C	D
LPV DA	545-1	327 (400-1)		NA
LNAV/VNAV DA	638-1 1/8	420 (500-1 1/8)		NA
LNAV MDA	640-1	422 (500-1)	640-1 1/4 422 (500-1 1/4)	NA
CIRCLING	700-1	482 (500-1)	820-1 3/4 602 (700-1 3/4)	NA

SC-4, 28 NOV 2024 to 26 DEC 2024

SC-4, 28 NOV 2024 to 26 DEC 2024