

LOC/DME I-FQD <b>109.55</b> Chan <b>32(Y)</b>	APP CRS <b>009°</b>	Rwy Idg TDZE Apt Elev	<b>5000</b> <b>1059</b> <b>1077</b>
---	------------------------	-----------------------------	---

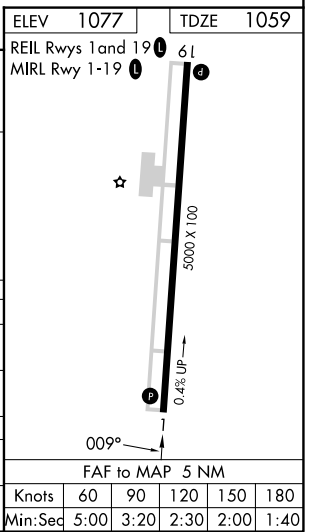
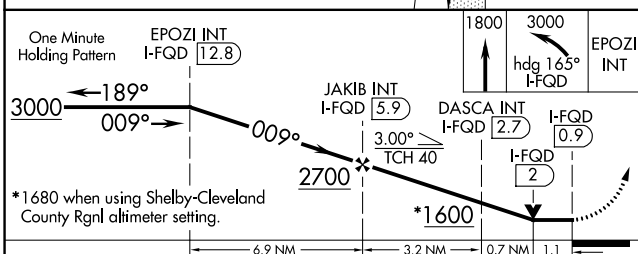
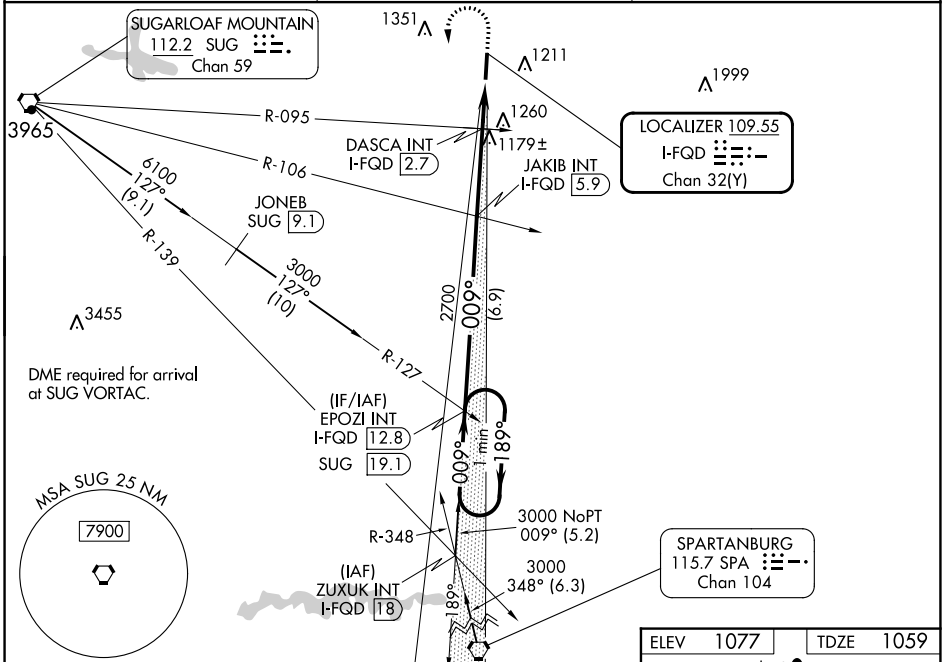
# LOC RWY 1

RUTHERFORD COUNTY/MARCHMAN FLD (FQD)

**NA** VDP NA with Shelby-Cleveland County Rgnl altimeter setting. When local altimeter setting not received, use Shelby-Cleveland County Rgnl altimeter setting and increase all MDA 80 feet and S-1 Cat C and D and Circling Cat C visibilities 1/8 mile; increase Circling Cat D visibility 1/4 mile. DASCAs fix minimums: Increase S-1 Cat C and D and Circling Cat C and D visibilities 1/4 mile.

**MISSED APPROACH:** Climb to 1800 then climbing left turn to 3000 on heading 165° and on I-FQD localizer south course to EPOZI INT/I-FQD 12.8 DME and hold.

AWOS-3 <b>118.275</b>	GREER APP CON ★ <b>119.4 350.2</b>	UNICOM <b>122.8 (CTAF) 0</b>
--------------------------	---------------------------------------	---------------------------------



CATEGORY	A	B	C	D
S-1	1600-1	541 (600-1)	1600-1 5/8	541 (600-1 5/8)
<b>C</b> CIRCLING	1600-1 523 (600-1)	1620-1 543 (600-1)	1640-1 5/8 563 (600-1 5/8)	1820-2 1/2 743 (800-2 1/2)
DASCAs FIX MINIMUMS (DUAL VOR RECEIVERS OR DME REQUIRED)				
S-1	1440-1	381 (400-1)	1440-1 1/8	381 (400-1 1/8)
<b>C</b> CIRCLING	1560-1 483 (500-1)	1620-1 543 (600-1)	1640-1 1/2 563 (600-1 1/2)	1820-1 1/2 743 (800-1 1/2)

# LOC RWY 1

SE-2, 28 NOV 2024 to 26 DEC 2024

SE-2, 28 NOV 2024 to 26 DEC 2024